



Huntingdonshire District Council

Annual Financial Report
For the Year Ended 31 March 2026

	Page
Narrative report	2 – 8
Explanatory foreword	9 – 10
Statement of responsibilities for the statement of accounts	11
Core financial statements	
• Comprehensive income and expenditure statement	12 - 13
• Movement in reserves statement	14 – 15
• Balance sheet	16
• Cash flow statement	17
Notes to the core financial statements	18 – 80
Supplementary financial statements	
• Collection fund	81
Notes to the supplementary financial statements	
• Notes to the collection fund	83 – 84
Auditor's report	85
Glossary	86 – 90

Welcome to Huntingdonshire District Council's Statement of Accounts for 2025/26.

This narrative report provides information about Huntingdonshire District Council (the Council), including the key issues affecting the Council and its accounts. The accounts summarise the Council's transactions and its financial position for the year ended 31 March 2026.

The report provides an explanation of the financial statements. As the financial statements demonstrate, the financial standing of the Council continues to maintain a robust financial position.

The report highlights the excellent management of the Council's resources and sets this in the context of the financial challenges being faced by the Council. The finance service operates in an environment of continuous improvement which involves organisational redesign, partnership working and advances in technology. This document provides:

- an introduction to the Council;
- key facts about Huntingdonshire and the Council;
- key information about the Council's management structure;
- capital strategy and capital programme;
- revenue outturn 2025/26;
- capital outturn 2025/26;
- treasury management;
- corporate and budgetary risks;
- basis of preparation;
- going concern assessment;
- receipt of further information; and
- acknowledgements.

The statement of accounts aims to provide information so that members of the public, including electors and residents of Huntingdonshire, Council members, partners, stakeholders and other interested parties have:

- a full and understandable explanation of the overarching financial position of the Council and the outturn for 2025/26;
- confidence that the public money with which the Council has been entrusted has been used and accounted for in an appropriate manner; and
- assurance that the financial position of the Council is sound and secure.

The style and format of the accounts comply with CIPFA standards and remain consistent with those presented in previous years. However, in line with CIPFA's continued focus on streamlining local authority financial reporting, the Council has prioritised the communication of key messages and enhanced overall clarity by removing unnecessary detail.

An introduction to Huntingdonshire District Council

Huntingdonshire is the largest district in Cambridgeshire by geographical area, covering over 900 square kilometres (approximately 350 square miles). At the time of the 2021 Census, the district had a population of 180,833, representing an increase of 11,325 residents, with most growth across older age bands. The district is predominantly rural in character, with a relatively low population of approximately 200 people per square kilometre (around 2 people per hectare). Huntingdonshire is divided into 26 wards, represented by 52 elected councillors.

Huntingdonshire District Council is responsible for delivering a range of local public services, including;

- environmental health;
- licensing;
- planning and building control;
- housing;
- leisure and health;
- business services;
- revenues and benefits;
- parking;
- household recycling and waste;
- commercial recycling and waste; and
- community safety.

In addition, a number of internal support services enable the effective delivery of these functions, including:

- finance;
- information technology;
- legal;
- human resources; and
- payroll.

Our Corporate Plan sets out what the Council is working to achieve:

“We all want to live in a place with the highest possible quality of life. A place people are drawn to, where they feel included and aspire to something. A place people are proud to call home.”

The Council aims to achieve this through the objectives and priorities set out in its Corporate Plan. These are:

- priority 1 – improving the quality of life for local people
- priority 2 – creating a better Huntingdonshire for future generations
- priority 3 – delivering good quality, high value-for-money services with good control and compliance with statutory obligations

How the Council will do this:

- priority 1 – improving the happiness and well-being of residents
 - keeping people out of crisis
 - helping people in crisis
- priority 2 – improving housing
 - forward thinking economic growth
 - lowering carbon emissions
- priority 3 – delivering good quality, high value-for-money services with good control and compliance with statutory obligations

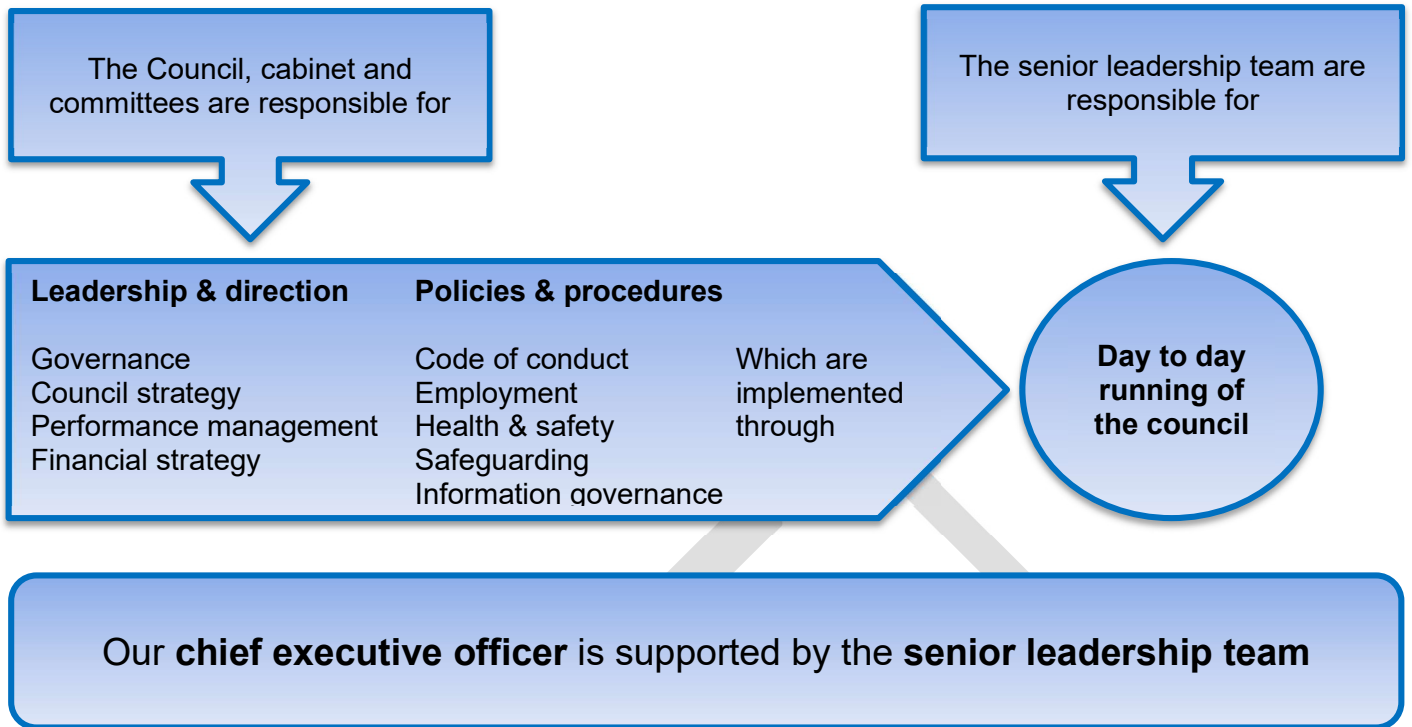
Key facts about Huntingdonshire and the Council

- **Population**
In the 2021 census, the total population of Huntingdonshire was 180,833, an increase of 11,325 residents, 6.7% since 2011 (source: 2021 census, ONS). The population is forecast to continue growing with local estimates suggesting it could exceed 200,000 by the mid-2030s. (source: JSNA – Summary for Huntingdonshire.). The district has an ageing population; 36,500 residents are aged 65 and above, an increase of 33% since 2011.
- **Economy and employment**
Unemployment levels in Huntingdonshire remain lower than the national average. In April 2025, approximately 2.4% of residents aged 16-64 were recorded in the DWP claimant count, compared to 4.2% for Great Britain as a whole. (source: NOMIS: claimant count)
- **Homes**
Huntingdonshire continues to be a growth area with 858 new homes delivered in 2024/25 (source: annual monitoring report 2025). The availability of housing that is affordable is a major issue in the district, with a growing gap between average earnings and housing costs. The average price of a property, based on sales, in Huntingdonshire as at December 2025 was £303,500 (which is a slight increase on last year’s figure of £348,381 (4.7%) (source: Cambridgeshire Insight). The 2025 affordability ratio for Huntingdonshire is 8.66, above the national average of 7.6. This means the median average home in Huntingdonshire is 8.66 times the median annual average earnings of a full-time employee.

The districts affordable housing comprises a mix of rented and shared ownership properties, reflecting ongoing efforts to increase the supply of affordable homes. Additional affordable homes continue to be delivered each year through development and planning obligations (source: Cambridgeshire insight / internal data).

Key information about the Council's management structure

Decisions about policy are made by the councillors elected by the residents of Huntingdonshire. Councillors are advised by the senior management of the Council.



DRAFT

The 2025/26 revenue outturn position

The Council's 2025/26 revenue outturn position is shown in the table below:

2024/25	2025/26						
	Approved Budget £000	Net budget rephase £000	Current budget £000	Spend/(Income) £000	Contributions to/(from) reserves £000	Outturn £000	Budget deficit/(surplus) £000
Outturn £000							
Service (New structure)							
2,370 Chief Executive Officer	1,021	-	1,021	1,395	-	1,395	374
2,879 Chief Digital & Information Officer	3,090	-	3,090	3,034	(13)	3,021	(69)
(416) Head of Economy, Regeneration & Housing	(195)	43	(152)	145	(259)	(114)	38
2,454 Head of Planning, Infrastructure & Public Protection	2,801	65	2,866	1,706	(466)	1,239	(1,627)
4,485 Head of Environmental Services	4,397	40	4,437	3,012	375	3,387	(1,050)
1,303 Head of Leisure, Health & Environment	1,077	(29)	1,049	1,124	188	1,312	263
(1,822) Head of Property & Facilities	(2,221)	-	(2,221)	(1,467)	-	(1,467)	754
974 Head of Human Resources & Officer Development	984	-	984	1,024	(101)	923	(61)
6,813 Head of Finance	7,618	-	7,618	4,857	1,343	5,069	(2,549)
1,642 Head of Democratic Services & Monitoring Officer	1,744	100	1,844	2,004	205	2,209	365
4,463 Customer Change Director	4,945	-	4,945	4,142	(55)	4,087	(858)
186 Head of Communications, Engagement & Public Affairs	247	-	247	360	-	360	113
728 Head of Policy, Performance & Emergency Planning	955	(5)	950	1,006	(123)	883	(67)
26,058 Net revenue expenditure	26,464	214	26,678	22,342	1,094	22,306	(4,372)
(1) Contribution to reserves	0	(214)	(214)	-	0	0	215
(799) Contribution to/(from) earmarked reserves	221	-	221	-	5,414	5,414	5,193
25,258 Budget requirement	26,685	-	26,685	22,342	6,508	27,720	1,036
Financing							
(11,661) NNDR & council tax (surplus)/deficit	(12,929)	-	(12,929)	(8,861)	-	(8,861)	4,068
(2,965) Government grants (non-specific)	(2,702)	-	(2,702)	(7,806)	-	(7,806)	(5,104)
10,632 Council tax for Huntingdonshire District Council	11,053	-	11,053	5,675	6,508	11,053	-

The view, as presented above, reflects the general fund revenue account. This presents the organisational structure and view used for the management reporting of the accounts during the financial year. The main detail of the Council's finances is reported throughout the year in the quarterly financial report.

The presentation of the information in the statement of accounts includes information on revenue fund balances and earmarked reserves, which at 31 March 2026 amounted to £2,175,000 and £39,460,000 respectively.

Capital strategy and capital programme 2025/26

The capital programme for 2025/26 onwards was presented to and approved by Council on 26 February 2025.

The Council maintains an integrated strategic capital programme, divided into several sections namely:

- ICT - this covers several technology related schemes;
- Customer Services – customer and call centre expenditure
- Facilities – expenditure relating to council buildings
- Environmental Services –waste and CCTV vehicles and equipment
- Community Services – disabled facilities adaptations grants
- Parks Countryside and Climate – expenditure relating to parks and climate adaptations
- Finance – company investment and software updates
- Economy Regeneration and Housing Delivery – Market Town schemes, business and housing grants
- Leisure and Health – projects at One Leisure sites
- Planning – Community Infrastructure Levy grants
- Property – schemes relating to commercial and operational properties

The revenue implications of financing the capital programme are factored into the budget for 2025/26 and beyond.

An annual treasury management strategy is agreed by Council, and this informs the governance framework.

The key messages are:

- **Investments**
The primary governing principle will remain security over return and the criteria for selecting counterparties reflect this.
- **Borrowing**
Overall, this has remained constant over the period (apart from a very small Salix loan) covered by this report and the Council will remain under-borrowed against its borrowing requirement due to the higher cost of carrying debt.
- **Governance**
Strategies are reviewed by the corporate governance committee with continuous monitoring which includes mid-year and year end reporting.

Capital outturn 2025/26

The approved gross capital programme for 2025/26 was £ £14,527,000. Schemes totalling £13,160,000 from 2024/25 were rephased to 2025/26 giving a total gross capital budget of £ £27,687,000. Further project delays in 2025/26, resulted in £ £11,694,000 being rephased to future years. Some projects, where additional borrowing would be required, have been descope and the approved expenditure for these removed from the future capital programme.

The Council spent £ £18,227,000 on the delivery of its capital programme in 2025/26 and has rephased schemes to 2026/27 where appropriate.

Capital expenditure was financed by, grants, revenue contributions and capital receipts. The Council has taken a prudent approach to financing the capital programme by deploying revenue reserves and cash balances instead of using external borrowing where possible as this produces a lower net cost.

The table below provides more detail of the spend in 2025/26:

Head of Service	Original Budget £000s	Year End Rephase ⁽²⁾ £000s	Net Rephase ⁽³⁾ £000s	Current Budget £000s	Actual Expenditure £000s	Over/(Under)Spend £000s	Rephase to 2026/27 £000s
Chief Digital and Information Officer	740	593	328	1,068	575	(493)	131
Customer Services	0	50	50	50	0	(50)	0
Facilities	0	0	0	0	580	580	0
Environmental Services	4,994	713	590	5,584	4,501	(1,083)	1,484
Community Services	1,650	10	(40)	1,610	1,977	367	10
Parks, Countryside & Climate	2,224	2,493	332	2,556	464	(2,092)	2,299
Finance	50	111	111	161	0	(161)	0
Economy, Regeneration and Housing Delivery	80	10,439	10,359	10,439	5,444	(4,995)	4,506
Leisure and Health	1,386	63	42	1,428	3,304	1,876	0
Planning	2,706	496	496	3,202	1,075	(2,128)	2,128
Property and Facilities	697	893	893	1,590	308	(1,282)	1,136
Total	14,527	15,860	13,160	27,687	18,227	(9,460)	11,694

The reasons for the re-phase to 2026/27 include:

- £4,506,000 – phasing of the Markets Towns and Future High Streets programmes to future years to complete projects in 2026/27.
- £2,299,000– for works at Hinchingsbrooke Country Park and other council parks.
- £1,136,000 – the enhancements to commercial properties have been delayed whilst commissioning surveys
- £2,128,000– CIL funded project delays by organisations receiving grants
- £1,331,000 – extending the life of the existing fleet to maximise value for money
- £135,000 to complete a purchase of a CCTV generator
- £131,000 of ICT schemes to complete on-going projects

Corporate and budgetary risks

The Council has an embedded process to manage risk and assist the achievement of its objectives alongside national and local performance targets. The corporate risk register plays an integral role in supporting the production of the corporate plan and is a key pillar of organisational governance.

Key corporate risks are detailed in the annual governance statement. The Council currently has a number of significant projects covering a wide range of services, which can involve working in partnership with others, many of which require considerable levels of one-off and recurrent funding from the Council. Specific risks relating to partnerships and projects have been incorporated into the annual governance statement where appropriate. The Council's annual governance statement provides more detailed insight into its vision strategy and corporate direction.

Basis of preparation

This statement of accounts has been prepared based on income and expenditure during the 2025/26 financial year and known assets and liabilities on 31 March 2026. Moreover, the accounts have been prepared on a going concern basis.

Disclosures are included within the statement of accounts based on an assessment of their materiality. A disclosure is considered material if, through an omission or a misstatement, the decisions made by users of the accounts would be influenced. This could be due to the value or the nature of the disclosure.

Receipt of further information

If you would like to receive further information about these accounts, please do not hesitate to contact me at Pathfinder House, St Mary's Street, Huntingdon, PE29 3TN.

Acknowledgements

The production of the statement of accounts would not have been possible without the exceptionally hard work and dedication of staff across the Council. I would like to express my gratitude to all colleagues from the finance team and other services that have assisted in the preparation of the annual accounts. I would also like to thank them for all their support during the financial year.

Lydia Morrison
Corporate Director of Finance & Resources (S151 Officer)

1. Statement of accounts explanations

The statement of accounts comprises:

- ❖ Statement of responsibilities
- ❖ Core financial statements
- ❖ Notes to the core financial statements
- ❖ Supplementary financial statements
- ❖ Notes to the supplementary financial statements

The objective of each of the accounting statements is:

❖ Statement of responsibilities

Identifies the officers responsible for the proper administration of the Council's financial affairs. The purpose is for the Chief Finance Officer to sign a statement that the accounts present a true and fair view of the financial position of the Council at the accounting date and of its income and expenditure, for the year then ended.

❖ Core financial statements

Comprehensive income and expenditure statement - shows the accounting cost in the year of providing services in accordance with the CIPFA Code of Practice, rather than the amount to be funded from taxation. Councils raise taxation to cover expenditure in accordance with statutory requirements; this may be different from the accounting cost. The taxation position is shown in both the movement in reserves statement and the expenditure and funding analysis.

Movement in reserves statement - shows the movement from the start of the year to the end, on the different reserves held by the Council, analysed into 'usable reserves' (i.e., those that can be applied to fund expenditure or reduce local taxation) and other 'unusable reserves'. The statement shows how the movements in year of the Council's reserves are broken down between gains and losses incurred, in accordance with the CIPFA Code of Practice, and the statutory adjustments required to return to the amount's chargeable to council tax for the year. The net (increase)/decrease line shows the statutory general fund balance movements in the year following those adjustments.

Balance sheet - shows the value, as at the balance sheet date, of the assets and liabilities recognised by the Council. The net assets of the Council (assets less liabilities) are matched by the reserves held by the Council. Reserves are reported in two categories. The first category of reserves is usable reserves, i.e., those reserves that the Council may use to provide services, subject to the need to maintain a prudent level of reserves and any statutory limitations on their use (for example the capital receipts reserve that may only be used to fund capital expenditure or repay debt). The second category of reserves is those that the Council cannot use to provide services. This category of reserves includes reserves that hold unrealised gains and losses (for example the revaluation reserve), where amounts would only become available to provide services if the assets are sold, and reserves that hold timing differences shown in the movement in reserves statement line 'adjustments between accounting basis and funding basis under regulations'.

Cash flow statement - shows the changes in cash and cash equivalents of the Council during the reporting period. The statement shows how the Council generates and uses cash and cash equivalents by classifying cash flows as operating, investing and financing activities. The amount of net cash flows arising from operating activities is a key indicator of the extent to which the operations of the Council are funded by way of taxation and grant income or from the recipients of services provided by the Council. Investing activities represent the extent to which cash outflows have been made for resources which are intended to contribute to the Council's future service delivery. Cash flows arising from financing activities are useful in predicting claims on future cash flows by providers of capital (i.e., borrowing) to the Council.

Expenditure and funding analysis – shows how the annual expenditure is used and funded from resources (government grants, council tax and business rates) by local authorities in comparison with those resources consumed or earned by authorities in accordance with the CIPFA Code of Practice. It also shows how this expenditure is allocated for decision making purposes between the Council’s portfolios.

❖ **Notes to the core financial statements**

Provides support to the core financial statements, which informs the reader, and gives sufficient information to present a good understanding of the Council’s activities.

❖ **Supplementary financial statements**

Collection fund – this account reflects the statutory requirement for billing authorities to maintain a separate collection fund, which shows the transactions of the Council in relation to non-domestic rates and council tax and illustrates the way in which these have been distributed.

❖ **Notes to the supplementary financial statements**

Provides support to the supplementary financial statements, which informs the reader and gives sufficient information, to present a good understanding of the Council’s activities.

2. Brief note of significant items in the core financial statements

The CIPFA Code of Practice on Local Authority Accounting in the United Kingdom 2025/26 sets out comprehensive requirements for group accounts. These require councils to consider all their interests and to prepare a full set of group financial statements when they have material interests in subsidiaries, associates or joint ventures.

The Council has a wholly owned subsidiary, HDC Ventures Ltd. The company has been dormant since incorporation, with no transactions, assets, or liabilities recognised to date. Group accounts have not been prepared on the basis of materiality.

3. Brief note explaining significance of any pension liability or asset

Any surplus or deficit on the Council’s pension fund is required to be recognised on the Balance Sheet in accordance with the CIPFA Code of Practice. The Council participates in the Cambridgeshire Pension Fund, administered by Cambridgeshire County Council, and the value of its share of the fund’s assets and liabilities has been assessed by the scheme actuary on 31 March 2026.

The actuarial valuation indicates that, before the application of any asset ceiling adjustment, the Council has a net pension surplus of approximately £58.4m (£52.9m surplus on 31 March 2025). This reflects the excess of the fair value of plan assets over the present value of defined benefit obligations at the reporting date.

However, in accordance with IAS19 and the CIPFA Code of Practice, the Council is required to consider the impact of the asset ceiling, which restricts the extent to which any surplus can be recognised. Following application of this adjustment, the surplus is reduced and a net defined benefit liability of £3.961m is recognised on the Balance Sheet within long-term liabilities (£17.426m liability on 31 March 2025).

The level of contributions payable by the Council to the pension fund is determined separately by the Fund Actuary as part of the triennial funding valuation process, the most recent of which was carried out as of 31 March 2025.

The Council's responsibilities

The Council is required to:

- make arrangements for the proper administration of its financial affairs and to secure that one of its officers has the responsibility for the administration of those affairs. In this Council, that officer is the Corporate Director of Finance and Resources.
- manage its affairs to secure economic, efficient and effective use of resources and safeguard its assets;
- approve the statement of accounts.

The Corporate Director of Finance and Resources

The Corporate Director of Finance and Resources is legally and professionally responsible for the preparation of the Council's statement of accounts in accordance with proper practices as set out in the CIPFA/LASAAC *Code of Practice on Local Authority Accounting in the United Kingdom 2025/26*- the Code.

In preparing this statement of accounts, I have:

- selected suitable accounting policies and then applied them consistently;
- made judgements and estimates that were reasonable and prudent;
- complied with the Code.

The Corporate Director of Finance and Resources has also:

- kept proper accounting records which were up to date;
- taken reasonable steps for the prevention and detection of fraud and other irregularities.

I certify that the statement of accounts presents a true and fair view of the financial position of the Council at the reporting date and its income and expenditure for the year ended 31 March 2026.

Lydia Morrison Corporate Director of Finance & Resources (S151 Officer)
(insert date)

Certificate of approval – Chair of Corporate Governance Committee

This is the unaudited statement of accounts. The Corporate Governance Committee of Huntingdonshire District Council, at its meeting on 8 June 2026, delegated authority to me as Chair of the Panel to approve the statement of accounts.

Councillor Michael Burke
(insert date)

Comprehensive income and expenditure statement

This statement shows the accounting cost in the year of providing services in accordance with generally accepted accounting practices, rather than the amount to be funded from taxation. Councils raise taxation to cover expenditure in accordance with regulations; this may be different from the accounting cost. The taxation position is shown in both the expenditure and funding analysis and the movement in reserves statement.

2024/25			2025/26			
Gross expenditure £000	Gross income £000	Net expenditure £000		Gross expenditure £000	Gross income £000	Net expenditure £000
8,695	(5,684)	3,011	Chief Digital & Information Officer	8,973	(6,020)	2,953
648	(1)	647	Chief Executive Officer	1,357	(8)	1,349
31,656	(27,299)	4,357	Customer Change Director	28,127	(24,219)	3,908
227	-	227	Head of Communications, Engagement & Public Affairs	341	-	341
3,070	(932)	2,138	Head of Democratic Services & Monitoring Office	3,354	(721)	2,633
8,013	(3,168)	4,845	Head of Economy, Regeneration & Housing	6,334	(2,716)	3,618
9,724	(2,197)	7,527	Head of Environmental Services	11,981	(6,128)	5,853
3,225	5	3,230	Head of Finance	2,652	(199)	2,453
927	-	927	Head of Human Resources & Officer Development	1,008	(33)	975
10,419	(7,787)	2,632	Head of Leisure, Health & Environment	10,211	(8,830)	1,381
10,967	(5,541)	5,426	Head of Planning, Infrastructure & Public Protection	9,803	(7,023)	2,780
875	-	875	Head of Policy, Performance & Emergency Planning	993	(16)	977
2,214	(507)	1,707	Head of Property & Facilities	2,294	(627)	1,667
90,660	(53,111)	37,549	Cost of services	87,428	(56,540)	30,888
			Other operating expenditure - note 11			
		9,061	Parish precepts			10,032
		(229)	Post stock transfer capital receipts			(685)
		609	Drainage board levies			632
		(175)	Loss/(gain) on the disposal of non-current assets			(56)
		9,266				9,923
			Financing and investment income - note 12			
		390	Interest payable and similar charges			390
		183	Pensions interest cost and expected return on pensions assets			937
		(3,988)	Interest receivable			(3,309)
		(5,939)	Income and expenditure in relation to investment properties and changes in their fair value			(4,376)
		(1,420)	Other investment, trading operations and shared services			(1,615)
		(10,774)				(7,973)
			Taxation and non-specific grant income - note 13			
		(19,653)	Council tax income			(20,897)
		(11,701)	Non-domestic rates			(9,048)
		(2,965)	Non-ringfenced government grants			(7,806)
		(3,365)	Developer contributions (CIL & S.106)			(2,493)
		(9,932)	Capital grants			(2,585)
		(47,616)				(42,829)
		(11,575)	Surplus on provision of services			(9,991)
		(3,624)	Surplus on the revaluation of non-current assets			(5,108)
		(69)	(Surplus)/deficit on financial assets measured at fair value through other comprehensive income			-
		14,051	Remeasurement of net defined benefit			(11,933)
		10,358	Other comprehensive income and expenditure			(17,041)
		(1,217)	Total comprehensive income and expenditure			(27,032)

Movement in reserves statement

This statement shows the movement from the start of the year to the end of the year on the different reserves held by the Council, analysed into 'usable reserves' (i.e., those that can be applied to fund expenditure or reduce local taxation) and other 'unusable reserves'. The statement shows how the movements in year of the Council's reserves are broken down between gains and losses incurred in accordance with generally accepted accounting practices and the statutory adjustments required to return to the amount's chargeable to council tax for the year. The net (increase)/decrease line shows the statutory general fund balance movements in the year following those adjustments.

	General fund balance £000	Earmarked general fund reserves £000	Capital receipts reserve £000	Capital grants unapplied £000	Total usable reserves £000	Unusable reserves £000	Total council reserves £000
Balance 1 April 2025	(2,175)	(36,911)	(4,721)	(59,330)	(103,137)	(72,086)	(175,223)
Movement in reserves during 2025/26							
Surplus on provision of services	(9,991)	-	-	-	(9,991)	-	(9,991)
Other comprehensive income and expenditure	-	-	-	-	-	(17,041)	(17,041)
Total comprehensive income and expenditure	(9,991)	-	-	-	(9,991)	(17,041)	(27,032)
Adjustments between accounting basis and financing basis under regulations (note 9)	7,442	-	(0)	4,459	11,900	(11,926)	(26)
Net (increase)/decrease before transfers to earmarked reserves	(2,549)	-	(0)	4,459	1,909	(28,967)	(27,058)
Transfers to/(from) earmarked reserves	2,549	(2,549)	-	-	-	-	-
(Increase)/decrease in year	(0)	(2,549)	(0)	4,459	1,909	(28,967)	(27,058)
Balance at 31 March 2026	(2,175)	(39,460)	(4,721)	(54,871)	(101,228)	(101,053)	(202,281)

	General fund balance £000	Earmarked general fund reserves £000	Capital receipts reserve £000	Capital grants unapplied £000	Total usable reserves £000	Unusable reserves £000	Total council reserves £000
Balance 1 April 2024	(2,175)	(33,300)	(4,547)	(56,767)	(96,789)	(77,217)	(174,006)
Movement in reserves during 2024/25							
Surplus on provision of services	(11,575)	-	-	-	(11,575)	-	(11,575)
Other comprehensive income and expenditure	-	-	-	-	-	10,358	10,358
Total comprehensive income and expenditure	(11,575)	-	-	-	(11,575)	10,358	(1,217)
Adjustments between accounting basis and financing basis under regulations (note 9)	7,964	-	(174)	(2,563)	5,227	(5,227)	-
Net (increase)/decrease before transfers to earmarked reserves	(3,611)	-	(174)	(2,563)	(6,348)	5,131	(1,217)
Transfers to/(from) earmarked reserves	3,611	(3,611)	-	-	-	-	-
(Increase)/decrease in year	-	(3,611)	(174)	(2,563)	(6,348)	5,131	(1,217)
Balance at 31 March 2025	(2,175)	(36,911)	(4,721)	(59,330)	(103,137)	(72,086)	(175,223)

Balance sheet

The balance sheet shows the value as at the balance sheet date of the assets and liabilities recognised by the Council. The net assets of the Council are matched by the reserves held by the Council. Reserves are reported in two categories. The first category of reserves is usable reserves, i.e., those reserves that the Council may use to provide services, subject to the need to maintain a prudent level of reserves and any statutory limitations on their use. The second category of reserves is those that the Council cannot use to provide services. This category of reserves includes reserves that hold unrealised gains and losses (e.g., the revaluation reserve), where amounts would only become available to provide services if the assets are sold, and reserves that hold timing differences shown in the movement in reserves statement line 'adjustments between accounting basis and funding basis under regulations.

31 March 2025		note	31 March 2026
£000			£000
90,961	Property, plant and equipment	14	102,112
65	Heritage assets		65
73,201	Investment property	15	74,318
517	Intangible assets	16	564
3,651	Long term investments	17	3,650
3,609	Long term debtors	17	3,609
172,004	Long term assets		184,318
47,750	Short term investments	17	46,300
226	Inventories	18	270
16,346	Short term debtors	19	13,834
17,869	Cash and cash equivalents	20	19,801
-	Assets held for sale	21	2,925
82,191	Current assets		83,130
(2,278)	Bank overdraft	20	(1,865)
(268)	Short term borrowing	17	(260)
(17,627)	Short term creditors	22	(18,684)
(2,842)	Grants received in advance - capital	22, 31	(2,719)
(3,732)	Provisions	39	(2,834)
(26,747)	Current liabilities		(26,362)
(34,255)	Long term borrowing	17	(34,303)
(544)	Other long term liabilities	17	(543)
(17,426)	Net pensions liability	37	(3,961)
(52,225)	Long term liabilities		(38,807)
175,223	Net assets		202,280
(103,137)	Usable reserves	23	(101,227)
(72,086)	Unusable reserves	24	(101,053)
(175,223)	Total reserves		(202,280)

Cash flow statement

The cash flow statement shows the changes in cash and cash equivalents of the Council during the reporting period. The statement shows how the Council generates and uses cash and cash equivalents by classifying cash flows as operating, investing and financing activities. The amount of net cash flows arising from operating activities is a key indicator of the extent to which the operations of the Council are funded by way of taxation and grant income or from the recipients of services provided by the Council. Investing activities represent the extent to which cash outflows have been made for resources which are intended to contribute to the Council's future service delivery. Cash flows arising from financing activities are useful in predicting claims on future cash flows by providers of capital (i.e., borrowing) to the Council.

2024/25		note	2025/26
£000			£000
11,575	Net surplus on the provision of services		9,991
(2,049)	Adjustment to deficit on the provision of services for non cash movements	25	(120)
(15,874)	Adjustments for items included in the net deficit on the provision of services that are investing and financing activities	25	(5,547)
(6,348)	Net cash flows from operating activities		4,323
7,002	Net cash flows from investing activities	26	(4,019)
621	Net cash flows from financing activities	27	2,720
1,275	Net (decrease)/increase in cash and cash equivalents		3,024
14,316	Cash and cash equivalents at the beginning of the reporting period		15,591
15,591	Cash and cash equivalents at the end of the reporting period	20	18,615

1. Accounting Policies

1.1 General principles

The statement of accounts summarises the Council's transactions for the 2025/26 financial year and its position on 31 March 2026. The Council is required to prepare an annual statement of accounts by the Accounts and Audit (England) Regulations 2015 (SI 2011 no.817), which require the accounts to be prepared in accordance with proper accounting practices. These practices primarily comprise the Code of Practice on Local Authority Accounting in the United Kingdom 2025/26, supported by International Financial Reporting Standards (IFRS) and statutory guidance issued under section 12 of the 2003 Act.

The accounting convention adopted in the Statement of Accounts is principally historical cost, modified by the revaluation of certain categories of non-current assets and financial instruments.

The accounts have been prepared on a going concern basis, under the assumption that the Council will continue in existence for the foreseeable future.

Unless otherwise stated the convention used in this document is to round amounts to the nearest thousand pounds. Throughout the statements all credit balances are shown with parentheses e.g. (£1,234).

1.2 Accruals of expenditure and income

All transactions of the Council are accounted for in the year in which they take place, not simply when the cash payments are made or received. In particular:

- fees, charges and rents due from customers are accounted for as income at the date the Council provides the relevant goods or services;
- supplies and services are recorded as expenditure when they are consumed - where there is a gap between the date supplies are received and their consumption, they are carried as stocks on the balance sheet;
- interest receivable on investments is accounted for based on the effective interest rate for the relevant financial instrument rather than the cash flows fixed or determined by the contract;
- where income and expenditure have been recognised but cash has not been received or paid, a debtor or creditor for the relevant amount is recorded in the balance sheet. Where it is doubtful that debts will be settled, the balance of debtors is written down and a charge made to revenue for the income that might not be collected; and
- income and expenditure are credited and debited to the relevant service revenue account unless they properly represent capital receipts or capital expenditure.

1.3 Cash and cash equivalents

Cash comprises cash in hand and call account deposits repayable without penalty on notice of not more than 24 hours. Cash equivalents are short-term, highly liquid investments that are readily convertible to known amounts of cash and are subject to an insignificant risk of changes in value. In the cash flow statement, cash and cash equivalents are shown net of bank overdrafts that are repayable on demand and form an integral part of the Council's cash management.

1.4 Charges to revenue for non-current assets

Services, support services and trading accounts are debited with the following amounts to record the cost of holding fixed assets during the year:

- depreciation attributable to the assets used by the relevant service;
- revaluation and impairment losses on assets used by the service where there are no accumulated gains in the revaluation reserve against which the losses can be written off; and
- amortisation of intangible fixed assets attributable to the service.

The Council is not required to raise council tax to fund depreciation, revaluation and impairment losses or amortisation. However, it is required to make an annual contribution from revenue towards the reduction in its overall borrowing requirement equal to either at least 4% of the underlying amount measured by the adjusted capital financing requirement or the asset life method where the MRP is determined by reference to the life of the asset and an equal amount charged each year. Depreciation, impairment losses and amortisations are therefore replaced by minimum revenue provision, by way of an adjusting transaction within the capital adjustment account in the movement in reserves statement for the difference between the two.

1.5 Council tax and non-domestic rates

Billing authorities act as agents, collecting council tax and non-domestic rates (NDR) on behalf of major preceptors (including government for NDR) and, as principals, collecting council tax and NDR for themselves. Billing authorities are required by statute to maintain a separate fund (i.e., the collection fund) for the collection and distribution of amounts due in respect of council tax and NDR. Under the legislative framework for the collection fund, billing authorities, major preceptors and central government share proportionately the risks and rewards that the amount of council tax and NDR collected could be more or less than predicted.

The council tax and NDR income included in the comprehensive income and expenditure statement (CIES) is the Council's share of accrued income for the year. However, regulations determine the amount of council tax and NDR that must be included in the Council's general fund. Therefore, the difference between the income included in the CIES and the amount required by regulation to be credited to the general fund is taken to the collection fund adjustment account and included as a reconciling item in the movement in reserves statement.

The balance sheet includes the Council's share of the end of year balances in respect of council tax and NDR relating to arrears, impairment allowances for doubtful debts, overpayments and prepayments and appeals.

Where debtor balances for the above are identified as impaired because of a likelihood arising from a past event that payments due under the statutory arrangements will not be made, the asset is written down and a charge made to the financing and investment income in the CIES. The impairment loss is measured as the difference between the carrying amount and the revised future cash flows.

1.6 Employee benefits

1.6.1 Benefits payable during employment

Short-term employee benefits are those due to be settled wholly within 12 months of the year-end. They include such benefits as wages and salaries, paid annual leave and paid sick leave, bonuses and non-monetary benefits for current employees and are recognised as an expense for services in the year in which employees render service to the Council.

An accrual is made for the cost of holiday entitlements (or any form of leave, e.g., time off in lieu) earned by employees but not taken before the year end which employees can carry into the next financial year. The accrual is made at the wage and salary rates applicable in the following year, being the period in which the employee takes the benefit. The accrual is charged to the surplus or deficit on the provision of services but is then reversed out through the movement in reserves statement so that holiday benefits are charged to revenue in the financial year in which the holiday absence occurs.

1.6.2 Termination benefits

Termination benefits are amounts payable as a result of a decision by the Council to terminate an officer's employment before the normal retirement date or an officer's decision to accept voluntary redundancy in exchange for those benefits, and are charged on an accruals basis to the relevant service costs line in the comprehensive income and expenditure statement at the earlier of when the Council can no longer withdraw the offer of those benefits or when the Council recognises costs for a restructuring.

When termination benefits involve the enhancement of pensions, statutory provisions require the general fund balance to be charged with the amount payable by the Council to the pension fund or pensioner in the year, not the amount calculated according to the relevant accounting standards. In the movement in reserves statement, appropriations are required to and from the pensions reserve to remove the notional debits and credits for pension enhancement termination benefits and replace them with debits for the cash paid to the pension fund and pensioners and any such amounts payable but unpaid at the year end.

1.6.3 Post-employment benefits

Most Council employees are members of the local government pension scheme, administered by Cambridgeshire County Council. The scheme provides defined benefits to members (retirement lump sums and pensions), earned as employees work for the Council.

The local government scheme is accounted for as a defined benefits scheme:

- the liabilities of Cambridgeshire County Council's superannuation fund attributable to the Council are included in the balance sheet on an actuarial basis using the projected unit method i.e., an assessment of the future payments that will be made in relation to retirement benefits earned to date by employees, based on assumptions about mortality rates, employee turnover rates etc. and projections of earnings for current employees.
- liabilities are discounted to their value at current prices, using an appropriate discount rate based on the indicative rate of return on high quality corporate bonds as identified by the actuary.
- the assets of Cambridgeshire County Council's superannuation fund attributable to the Council are included in the balance sheet at their fair value:
 - quoted securities – current bid price
 - unquoted securities – professional estimate
 - unitised securities – current bid price
 - property – market value
- The change in the net pension's liability is analysed into the following components:
 - service cost comprising:
 - current service cost – the increase in liabilities as a result of years of service earned this year (allocated in the comprehensive income and expenditure statement to the services for which the employees worked).
 - past service cost – the increase in liabilities arising from current year decisions whose effect relates to years of service earned in earlier years (debited to the net cost of services in the comprehensive income and expenditure statement as part of non-distributed costs).
 - net interest on the defined benefit liability, i.e., net interest expense for the Council – the change during the year in the net defined benefit liability that arises from the passage of time (charged to the financing and investment income and expenditure line in the comprehensive income and expenditure statement).
 - re-measurement comprising:
 - the return on plan assets – excluding amounts included in net interest on the net defined benefit asset (charged to the pensions reserve as other comprehensive income and expenditure).

- actuarial gains and losses – changes in the net pensions asset that arise because events have not coincided with assumptions made at the last actuarial valuation or because the actuaries have updated their assumptions (charged to the pensions reserve as other comprehensive income and expenditure).
- any change in the effect of the asset ceiling, excluding amounts included in net interest on the net defined benefit asset.
- Contributions paid to Cambridgeshire County Council's pension fund – cash paid as employer's contributions to the pension fund in settlement of liabilities. This is not accounted for as an expense.

In relation to retirement benefits, statutory provisions require the general fund balance to be charged with the amount payable by the Council to the pension fund or directly to pensioners in the year, not the amount calculated according to the relevant accounting standards. In the movement in reserves statement, this means that there are transfers to and from the pensions reserve to remove the notional debits and credits for retirement benefits and replace them with debits for the actual cash paid and any such amounts payable but unpaid at the year end. The negative balance that arises on the pensions reserve thereby measures the beneficial impact to the general fund of being required to account for retirement benefits based on cash flows rather than as benefits are earned by employees.

1.6.4 Discretionary benefits

The Council also has restricted powers to make discretionary awards of retirement benefits in the event of early retirements. Any liabilities estimated to arise because of an award to any member of staff are accrued in the year of the decision to make the award and accounted for using the same policies as are applied to the local government pension scheme.

1.7 Events after the balance sheet date

Events after the balance sheet date are those events, both favourable and unfavourable, that have occurred between the balance sheet date and the date when the statement of accounts is authorised for issue. Two types of events can be identified:

- those that provide evidence of conditions that existed at the balance sheet date – the statement of accounts is adjusted to reflect such events.
- those that are indicative of conditions that arose after the balance sheet date – the statement of accounts is not adjusted to reflect such events, but where a category of events would have a material effect, disclosure is made in the notes of the nature of the events and their estimated financial effect.

Events taking place after the date of authorisation for issue are not reflected in the statement of accounts.

1.8 Financial instruments

1.8.1 Financial liabilities

Financial liabilities are recognised on the balance sheet when the Council becomes a party to the contractual provisions of a financial instrument and are measured at fair value. Annual charges to the financing and investment income and expenditure line in the comprehensive income and expenditure statement for interest payable are based on the carrying amount of the liability, multiplied by the effective rate of interest for the instrument.

This means that for the borrowings the Council has, the amount presented in the balance sheet is the outstanding principal repayable plus accrued interest, and interest charged to the comprehensive income and expenditure statement is the amount payable for the year.

1.8.2 Financial assets

Financial assets are classified based on a classification and measurement approach that reflects the business model for holding the financial assets and their cash flow characteristics. There are three main classes of financial assets measured at:

- amortised cost;
- fair value through profit or loss (FVPL); and
- fair value through other comprehensive income (FVOCI)

The Council's business model is to hold investments to collect contractual cash flows. Financial assets are therefore classified as amortised costs, except for those whose contractual payments are not solely payment of principal and interest (i.e., where the cash flows do not take the form of a basic debt instrument)

1.8.2.1 Financial assets measured at amortised cost

Financial assets measured at amortised cost are recognised on the balance sheet when the Council becomes a party to the contractual provisions of a financial instrument and are initially measured at fair value. They are subsequently measured at their amortised cost. Annual credits to the financing and investment income and expenditure line in the comprehensive income and expenditure statement for interest receivable are based on the carrying amount of the asset multiplied by the effective rate of interest for the instrument. This means that the amount presented in the balance sheet is the outstanding principal receivable plus accrued interest, and interest charged to the comprehensive income and expenditure statement is the amount receivable for the year.

However, the authority has made a number of loans to voluntary organisations at less than market rates (soft loans). When soft loans are made, a loss is recorded in the comprehensive income and expenditure statement (debited to the appropriate service) for the present value of the interest that will be foregone over the life of the instrument, resulting in a lower amortised cost than the outstanding principal.

The Council's business model to collect cash flow comprises:

- loans to other local authorities
- loans to small companies
- short term cash investments
- trade receivables

1.8.2.2 Financial assets measured fair value through profit or loss (FVPL)

Financial assets that are measured at FVPL are recognised on the balance sheet when the Council becomes a party to the contractual provisions of a financial instrument and are initially measured and carried at fair value. The fair value gains and losses are recognised as they arrive in (surplus)/deficit on the provision of services.

1.8.2.3 Financial assets measured fair value through other comprehensive income (FVOCI)

Financial assets that are measured at FVOCI are recognised on the balance sheet when the Council becomes a party to the contractual provisions of a financial instrument; and the Council's business model is both to collect cash flow and sell the instrument. The Council has shown the following assets within this category:

- CCLA property fund

The fair value measurements of the financial assets are based on the following techniques:

- instruments with quoted market prices – the market price
- other instruments with fixed and determinable payments – discounted cash flow analysis

The inputs to the measurement techniques are categorised in accordance with the following three levels:

- level 1 inputs – quoted prices in active markets for identical assets that the Council can access at the measurement date.
- level 2 inputs - inputs (other than quoted prices included within level 1) that are observable for the asset, either directly or indirectly
- level 3 inputs – unobservable inputs for the asset.

1.8.2.4 Expected credit loss model

The Council recognises expected credit losses on all of its financial assets held at amortised cost.

Impairment losses are calculated to reflect the expectation that the future cash flows might not take place because the borrower could default on their obligations. Credit risk plays an important part in assessing losses. Where risk has increased significantly since an instrument was initially recognised, losses are assessed on a lifetime basis. Where risk has not increased significantly or remains low, losses are assessed on the basis of 12 month expected losses.

1.9 Government grants and other contributions

Whether paid on account, by instalments or in arrears, government grants and third-party contributions and donations are recognised as due to the Council when there is reasonable assurance that:

- the Council will comply with the conditions attached to the payments, and
- the grants or contributions will be received.

Amounts recognised as due to the Council are not credited to the comprehensive income and expenditure statement until conditions attached to the grant or contribution have been satisfied. Conditions are stipulations that specify that the future economic benefits or service potential embodied in the asset acquired using the grant or contribution are required to be consumed by the recipient as specified, or future economic benefits or service potential must be returned to the transferor.

Monies advanced as grants and contributions for which conditions have not been satisfied are carried in the balance sheet as creditors. When conditions are satisfied, the grant or contribution is credited to the relevant service line or taxation and non-specific grant income in the comprehensive income and expenditure statement.

Where capital grants are credited to the comprehensive income and expenditure statement, they are reversed out of the general fund balance in the movement in reserves statement. Where the grant has yet to be used to finance capital expenditure, it is posted to the capital grants unapplied reserve. Amounts in the capital grants unapplied reserve are transferred to the capital adjustment account once they have been applied to fund capital expenditure.

1.10 Intangible assets

Expenditure on non-monetary assets that do not have physical substance but are controlled by the Council because of past events (e.g. software licences) is capitalised when it is expected that future economic benefits or service potential will flow from the intangible asset to the Council.

Intangible assets are measured initially at cost. Amounts are only revalued where the fair value of the assets held by the Council can be determined by reference to an active market. In practice, no intangible asset held by the authority meets this criterion, and they are therefore carried at cost less accumulated depreciation and any accumulated impairment loss. The depreciable amount of an intangible asset is amortised over its useful life to the relevant service line in the comprehensive income and expenditure statement. Any gain or loss arising on the disposal or abandonment of an intangible asset is posted to the other operating expenditure line in the Comprehensive Income and Expenditure Statement.

Where expenditure on intangible assets qualifies as capital expenditure for statutory purposes, amortisation, impairment losses and disposal gains and losses are not permitted to have an impact on the general fund balance. The gains and losses are therefore reversed out of the general fund balance in the movement in reserves statement and posted to the capital adjustment account.

1.11 Inventories and long-term contracts

Inventories are included in the balance sheet at the lower of cost and net realisable value.

Long term contracts are accounted for based on the comprehensive income and expenditure statement being charged in the year during which the cost of goods or services were received or provided.

1.12 Investment property

Investment properties are those (land or a building, or part of a building, or both) that are held solely to earn rentals or for capital appreciation or both. The definition is not met if the property is used in any way to facilitate the delivery of services or production of goods or is held for sale.

Investment properties are measured initially at cost and subsequently at fair value, based on the amount at which the asset could be exchanged between knowledgeable parties at arm's length. Properties are not depreciated but are revalued annually according to market conditions at the year end. Gains and losses on revaluation are posted to the financing and investment income and expenditure line in the comprehensive income and expenditure statement. The same treatment is applied to gains and losses on disposal.

Rentals and costs relating to investment properties are posted to the financing and investment income and expenditure line in the comprehensive income and expenditure statement and result in a gain or loss for the general fund balance. However, revaluation and disposal gains and losses are not permitted by statutory arrangements to have an impact on the general fund balance. The gains and losses are therefore reversed out of the general fund balance in the movement in reserves statement and posted to the capital adjustment account and any sale proceeds credited to the capital receipts reserve.

1.13 Leases

1.13.1 The Council as lessee

The Council classifies contracts as leases based on their substance. Contracts and parts of contracts, including those described as contracts for services, are analysed to determine whether they convey the right to control the use of an identified asset, through rights both to obtain substantially all the economic benefits or service potential from that asset and to direct its use. The Code expands the scope of IFRS 16 *Leases* to include arrangements with nil consideration, peppercorn or nominal payments.

- Initial measurement

Leases are recognised as right-of-use assets with a corresponding liability at the date from which the leased asset is available for use (or the IFRS 16 transition date, if later). The leases are typically for fixed periods lasting more than one year but may have extension options. The Council initially recognises lease liabilities measured at the present value of lease payments, discounting by applying the Council's incremental borrowing rate wherever the interest rate implicit in the lease cannot be determined. Lease payments included in the measurement of the lease liability include:

- fixed payments, including in-substance fixed payments
- variable lease payments that depend on an index or rate, initially measured using the prevailing index or rate as at the adoption date
- amounts expected to be payable under a residual value guarantee
- the exercise price under a purchase option that the Council is reasonably certain to exercise
- lease payments in an optional renewal period if the Council is reasonably certain to exercise an extension option
- penalties for early termination of a lease, unless the Council is reasonably certain not to terminate early.

The right-of-use asset is measured at the amount of the lease liability, adjusted for any prepayments made, plus any direct costs incurred to dismantle and remove the underlying asset or restore the underlying asset on the site on which it is located, less any lease incentives received.

However, for peppercorn, nominal payments or nil consideration leases, the asset is measured at fair value.

- Subsequent measurement

The right-of-use asset is subsequently measured using the fair value model. The Council considers the cost model to be a reasonable proxy except for:

- assets held under non-commercial leases;
- leases where rent reviews do not necessarily reflect market conditions;
- leases with terms of more than five years that do not have any provision for rent reviews; and
- leases where rent reviews will be at periods of more than five years.

For these leases, the asset is carried at a revalued amount. In these financial statements, right-of-use assets held under index-linked leases have been adjusted for changes in the relevant index, while assets held under peppercorn or nil consideration leases have been valued using market prices or rentals for equivalent land and properties.

The right-of-use asset is depreciated straight-line over the shorter period of remaining lease term and useful life of the underlying asset as at the date of adoption.

The lease liability is subsequently measured at amortised cost, using the effective interest method. The liability is remeasured when:

- there is a change in future lease payments arising from a change in index or rate;
- there is a change in the group's estimate of the amount expected to be payable under a residual value guarantee;
- the Council changes its assessment of whether it will exercise a purchase, extension or termination option; or
- there is a revised in-substance fixed lease payment.

When such a remeasurement occurs, a corresponding adjustment is made to the carrying amount of the right-of-use asset, with any further adjustment required from remeasurement being recorded in the income statement.

- Low value and short lease exemption

As permitted by the code, the Council excludes leases:

- for low-value items that cost less than £10,000 when new, provided they are not highly dependent on or integrated with other items; and
- with a term shorter than 12 months (comprising the non-cancellable period plus any extension options that the Council is reasonably certain to exercise and any termination options that the Council is reasonably certain not to exercise).

- Lease expenditure

Expenditure in the Comprehensive Income and Expenditure Statement includes interest, straight-line depreciation, any asset impairments and changes in variable lease payments not included in the measurement of the liability during the period in which the triggering event occurred. Lease payments are debited against the liability. Rentals for leases of low-value items or shorter than 12 months are expensed.

1.13.2 The Council as lessor

Leases are classified as finance leases where the terms of the lease transfer substantially all the risks and rewards incidental to ownership of the property, plant or equipment from the lessor to the lessee. All other leases are classified as operating leases.

- Finance leases

Where the Council grants a finance lease over a property or an item of plant or equipment, the relevant asset is written out of the balance sheet as a disposal and replaced by a long-term debtor in the Balance Sheet valued on the future income due under the finance lease. This value reduces over time as principal repayments are made.

Lease rental receivables are apportioned between:

- a charge for the acquisition of the interest in the property – applied to write down the lease debtor, and
- finance income (credited to the financing and investment income and expenditure line in the comprehensive income and expenditure statement).

- Operating leases

Where the Council grants an operating lease over a property or an item of plant or equipment, the asset is retained in the balance sheet. Rental income is credited to the other operating expenditure line in the comprehensive income and expenditure statement. Credits are made on a straight-line basis over the life of the lease, even if this does not match the pattern of payments. Initial direct costs incurred in negotiating and arranging the lease are added to the carrying amount of the relevant asset and charged as expenses over the lease term on the same basis as rental income.

1.14 Overheads and support services

The cost of overheads and support services are charged to service segments in accordance with the Council's arrangements for accountability and financial performance.

1.15 Prior period adjustments, changes in accounting policies and estimates and errors

Prior period adjustments may arise because of a change in accounting policies or to correct a material error. Changes in accounting estimates are accounted for prospectively, i.e., in the current and future years affected by the change and do not give rise to a prior period adjustment.

Changes in accounting policies are only made when required by proper accounting practices or the change provides more reliable or relevant information about the effect of transactions, other events and conditions on the Council's financial position or financial performance. Where a change is made, it is applied retrospectively (unless stated otherwise) by adjusting opening balances and comparative amounts for the prior period as if the new policy had always been applied.

Material errors discovered in prior period figures are corrected retrospectively by amending opening balances and comparative amounts for the prior period.

1.16 Property, plant and equipment

Assets that have physical substance and are held for use in the production or supply of goods or services, for rental to others, or for administrative purposes, and that are expected to be used during more than one financial year are classified as property, plant and equipment.

1.16.1 Recognition

Expenditure on the acquisition, creation or enhancement of fixed assets is capitalised on an accrual's basis in the accounts. Expenditure above £10,000 on fixed assets is capitalised. This excludes expenditure on routine repairs and maintenance of fixed assets which is charged direct to service revenue accounts.

1.16.2 Measurement

Assets are initially measured at cost, comprising all expenditure that is directly attributable to bringing the asset into working condition for its intended use. Assets are then carried in the balance sheet using the following measurement bases:

- assets surplus to requirements - fair value
- specialised land & buildings –depreciated replacement cost (DRC) which is used as an estimate of current value
- other land and buildings - EUV
- vehicles, plant and equipment – DRC
- infrastructure assets – DRC
- community assets – historic cost
- assets under construction – historic cost
- heritage assets – historic cost

Assets included in the balance sheet at current value are revalued on a rolling basis within a three-year timeframe. Increases in valuations are matched by credits in the revaluation reserve to recognise unrealised gains. Exceptionally, gains might be credited to the comprehensive income and expenditure statement where they arise from the reversal of an impairment loss previously charged to a service revenue account.

1.16.3 Impairment

The values of each category of assets and of material individual assets that are not being depreciated are reviewed at the end of each financial year for evidence of reductions in value. Where impairment is identified as part of this review or as a result of a valuation exercise, this is accounted for:

- where there is a balance of revaluation gains for the asset in the revaluation reserve, the carrying amount of the asset is written down against the balance (up to the amount of the accumulated gains)
- where there is no balance on the revaluation reserve or an insufficient balance, the carrying amount of the asset is written down against the relevant line(s) in the comprehensive income and expenditure account.

Where an impairment loss is reversed subsequently, the reversal is credited to the relevant service line(s) in the comprehensive income and expenditure statement up to the amount of the original loss, adjusted for depreciation that would have been charged if the loss had not been recognised.

1.16.4 Disposals and non-current assets held for resale

When it becomes probable that an asset will be sold, it is reclassified as an asset held for sale (AHfS). The asset is revalued immediately before reclassification. Where there is a subsequent decrease in value, the loss is posted to other operating costs in the comprehensive income and expenditure statement. Gains are recognised only up to the amount of any recognised previous losses. Depreciation is not charged on AHfS.

If assets no longer meet the criteria to be classified as AHfS, they are reclassified back to non-current assets and valued at the lower of their carrying amount before they were classified for sale, adjusted for depreciation, amortisation or revaluations that would have been recognised had they not been classified as held for resale, and their recoverable amount at the date of the decision not to sell.

When an asset is disposed of or decommissioned, the value of the asset in the balance sheet is written off to the comprehensive income and expenditure statement as part of the gain or loss on disposal. Receipts from disposals are credited to the comprehensive income and expenditure statement as part of the gain or loss on disposal (i.e., netted off against the carrying value of the asset at the time of disposal). Any revaluation gains in the revaluation reserve are transferred to the capital adjustment account. Receipts above £10,000 are categorised as capital receipts. Capital receipts can only be used for new capital investment or set aside to reduce the Council's underlying need to borrow.

The written-off value of disposals is not a charge against council tax, as the cost of fixed assets is fully provided for under separate arrangements for capital financing.

1.16.5 Depreciation

Depreciation is provided in respect of all the relevant property, plant and equipment, other than investment properties, where a finite useful life has been determined. This is with the intention of writing off their balance sheet values in equal annual instalments over their remaining expected useful lives. This is commonly referred to as the 'straight line' method. An exception is made for assets without a determinable finite life (i.e., freehold land and certain community assets) and assets that are not yet available for use (i.e., assets under construction).

Revaluation gains are also depreciated, with an amount equal to the difference between the current value depreciation charge on assets and the depreciation that would have been chargeable based on their historical cost being transferred each year from the revaluation reserve to the capital adjustment account.

1.16.6 Componentisation

The objective of component accounting is to follow proper accounting practice by ensuring that property, plant and equipment is accurately and fairly included in the Council's balance sheet, and that the comprehensive income and expenditure statement properly reflects the consumption of economic benefits of those assets over their useful lives through depreciation charges.

To do this, the Council must first determine which of its assets have a material value. For Huntingdonshire District Council materiality in this instance has been set as any asset with a carrying value equal to or greater than 10% of the total carrying value for any asset group.

Where an asset is deemed material then the Council must ensure that the overall value of an asset is fairly apportioned over significant components that need to be accounted for separately and that their useful lives and the method of depreciation are determined on a reasonable and consistent basis. For Huntingdonshire District Council significance has been set at equal to or greater than 10% of the asset's cost but with a de-minimis threshold of £100,000.

1.17 Provisions, contingent liabilities and contingent assets

1.17.1 Provisions

Provisions are made where an event has taken place that gives the Council a legal or constructive obligation that probably requires settlement by a transfer of economic benefits or service potential, and a reliable estimate can be made of the amount of the obligation. For instance, the Council may be involved in a court case that could eventually result in the making of a settlement or the payment of compensation.

Provisions are charged as an expense to the appropriate service line in the comprehensive income and expenditure statement in the year that the Council becomes aware of the obligation and are measured at the best estimate at the balance sheet date of the expenditure required to settle the obligation, considering relevant risks and uncertainties.

When payments are eventually made, they are charged to the provision carried in the balance sheet. Estimated settlements are reviewed at the end of each financial year – where it becomes less than probable that a transfer of economic benefits will now be required (or a lower settlement than anticipated is made), the provision is reversed and credited back to the relevant service.

1.17.2 Contingent liabilities

A contingent liability arises where an event has taken place that gives the Council a possible obligation whose existence will only be confirmed by the occurrence or otherwise of uncertain future events not wholly within the control of the Council. Contingent liabilities also arise in circumstances where a provision would otherwise be made but either it is not probable that an outflow of resources will be required, or the amount of the obligation cannot be measured reliably.

Contingent liabilities are not recognised in the balance sheet but disclosed in a note to the accounts.

1.17.3 Contingent assets

A contingent asset arises where an event has taken place that gives the Council a possible asset whose existence will only be confirmed by the occurrence or otherwise of uncertain future events not wholly within the control of the Council.

Contingent assets are not recognised in the balance sheet but disclosed in a note to the accounts where it is probable that there will be an inflow of economic benefits or service potential.

1.18 Reserves

The Council sets aside specific amounts as reserves for future policy purposes or to cover contingencies. Reserves are created by appropriating amounts out of the general fund balance in the movement in reserves statement. When expenditure to be financed from a reserve is incurred, it is charged to the appropriate service revenue account. The value is then appropriated from the reserve and credited to the general fund balance so that there is no charge against council tax for the expenditure.

Certain reserves are kept to manage the accounting processes for non-current assets, financial instruments, and retirement and employee benefits and do not represent usable resources for the Council.

1.19 Revenue expenditure funded from capital under statute

Expenditure incurred during the year that may be capitalised under statutory provisions that does not result in the creation of a non-current asset has been charged as expenditure to the relevant service in the comprehensive income and expenditure statement in the year. Where the Council has determined to meet the cost of this expenditure from existing capital resources or by borrowing, a transfer in the movement in reserves statement from the general fund balance to the capital adjustment account then reverses out the amounts charged so that there is no impact on the level of council tax.

1.20 VAT

VAT is only included within the revenue and capital income and expenditure accounts to the extent that it is irrecoverable.

2. Accounting standards not yet adopted

The Code of Practice on Local Council Accounting in the United Kingdom (the code) requires the disclosure of information relating to the expected impact of an accounting change that will be required by a new standard that has been issued but not yet adopted by the 2025/26 code.

The code also requires that changes in accounting policy are to be applied retrospectively unless transitional arrangements are specified; this would therefore result in an impact on disclosures spanning two financial years.

The accounting changes to be introduced in the 2026/27 code are:

- changes to Financial Instruments, IFRS 9 and IFRS7, relating to the classification and measurement of financial instruments (issued in May 2024)
- annual improvement to IFRS (Volume 11): A package of minor amendments across multiple standards (issued in July 2024)
- amendments to FRS 102 the Financial Reporting Standard applicable in the UK and republic of Ireland (Amendments to Heritage assets) (issued in March 2024)
- contracts referencing nature-dependent electricity, IFRS 9 and IFRS 7, (issued in December 2024)

These changes are not expected to have a material impact on the Council's statements.

3. Critical judgements in applying accounting policies

In applying the accounting policies set out in note 1, the Council has had to make certain judgments about complex transactions or those involving uncertainty about future events.

The critical judgements made in the statement of accounts are:

- There is a high degree of uncertainty about future levels of funding for local government. However, the Council has determined that this uncertainty is not yet sufficient to provide an indication that the assets of the Council might be impaired because of the need to close facilities and reduce levels of service provision.

4. Assumptions made about the future and other major sources of estimation uncertainty

The statement of accounts contains estimated figures that are based on assumptions made by the Council about the future or that are otherwise uncertain. Estimates are made considering historical experience, current trends, and other relevant factors. However, because balances cannot be determined with certainty, actual results could be materially different from the assumptions and estimates. The items in the Council's balance sheet on 31 March 2026 for which there is a significant risk of material adjustment in the forthcoming financial year are as follows:

- Business rates - The participants in the Council's non-domestic rates collection fund share the costs of any successful appeals to reduce the rateable value of a property. This includes the cost of any outstanding appeals which may be backdated prior to 1 April 2014. To estimate the provision for outstanding appeals, the Council has reviewed the outstanding appeals on 31 March 2026. An estimated provision of £2.244m has been included in the collection fund in respect of successful appeals costs. The Council's share of any such collection fund costs is 40% or £0.898m of the total provision and this is included in the general fund balance.

The estimate has been calculated using the Valuation Office (VOA) ratings list of appeals and the analysis of successful appeals to date.

- Council tax (surplus)/deficit - Assumptions are made on the likely (surplus)/deficit for the year in January prior to the year end. The information forms part of the budget setting process for Huntingdonshire District Council, Cambridgeshire County Council, Cambridgeshire Police & Crime Commissioner, Cambridgeshire Fire Council and Cambridgeshire & Peterborough Combined Council. If the actual (surplus)/deficit differs significantly from the estimated assumption position from January, there will be an impact in the following year's budget process. A higher deficit could mean more savings being required or an increased council tax.
- Earmarked reserves - The Council has a number of earmarked reserves, which are reviewed annually to assess the expected year-end balance. The expected reserve balances form part of the budget setting process. Although the reserve levels are not prescribed, major variations could have an impact on service budgets as expected funds may not be available, which could lead to savings being required in year.
- Property, plant and equipment - Assets are depreciated over useful lives that are dependent on assumptions about the level of repairs and maintenance that will be incurred in relation to individual assets. In the current economic climate, there will be increased pressure on all budgets, leading to difficult choices which might result in the Council being less able to sustain its current spending on repairs and maintenance, bringing into doubt the useful lives assigned to assets. If the useful life of assets is reduced, depreciation increases and the carrying amount of the assets falls. It is estimated that the annual depreciation charge for buildings would increase by £23,500 for every year that useful lives had to be reduced.

In line with the Code of Practice on Local Council Accounting in the United Kingdom 2025/26, based on International Financial Reporting Standards, the Council has not charged depreciation on land, investment properties, community assets, surplus assets and assets under construction. For all these assets, the total value for 2025/26 for land is £62,730,000 and buildings is £51,280,000 (2024/25 land is £59,630,000 and buildings is £45,594,000).

5. Material items of income and expenditure

The primary purpose of this note is to disclose those material items of income and expenditure that are not part of the ordinary course of business or events of the Council (i.e., extraordinary). During 2025/26 no such items of income or expenditure were incurred (2024/25 £nil).

6. Events after the balance sheet date

The unaudited Statement of Accounts were issued on 8 June 2026. Where events taking place before this date provided information about the conditions existing on 31 March 2026, the figures in the financial statements and notes would be adjusted in all material respects to reflect the impact of this information. The financial statement and notes would not be adjusted for events which took place after 31 March 2026 if they provide information that is relevant to an understanding of the Council's financial position but do not relate to conditions at that date.

7 Expenditure and funding analysis

This analysis shows how annual expenditure is used and funded from resources (government grants, council tax and business rates) by the Council in comparison with those resources consumed or earned by the Council in accordance with generally accepted accounting practices. It also shows how this expenditure is allocated for decision making purposes between the Council's portfolios. Income and expenditure accounted for under generally accepted accounting practices is presented more fully in the comprehensive income and expenditure statement.

	2025/26					Net expenditure chargeable to the general fund £000
	Net expenditure in the comprehensive income and expenditure statement £000	Adjustments between the funding and accounting basis			Total Adjustments £000	
		Adjustments for capital purposes £000	Net change for the pension's adjustment £000	Other Differences £000		
Chief Digital & Information Officer	2,953	(200)	263	-	63	3,016
Chief Executive Officer	1,349	-	46	-	46	1,395
Customer Change Director	3,908	(9)	239	-	230	4,138
Head of Communications, Engagement & Public Affairs	341	-	19	-	19	360
Head of Democratic Services & Monitoring Officer	2,633	(3)	51	-	48	2,681
Head of Economy, Regeneration & Housing	3,618	(3,659)	70	(0)	(3,589)	29
Head of Environmental Services	5,853	(1,387)	-	-	(1,387)	4,466
Head of Finance	2,453	(45)	698	-	653	3,106
Head of Human Resources & Officer Development	975	-	40	-	40	1,015
Head of Leisure, Health & Environment	1,381	(625)	339	-	(286)	1,095
Head of Planning, Infrastructure & Public Protection	2,780	(1,337)	263	-	(1,074)	1,706
Head of Policy, Performance & Emergency Planning	977	(17)	46	-	29	1,006
Head of Property & Facilities	1,667	(418)	35	-	(383)	1,284
Net cost of services	30,888	(7,700)	2,109	(0)	(5,591)	25,297
Other income and expenditure	(40,879)	6,410	(577)	7,226	13,059	(27,820)
(Surplus)/deficit for the year	(9,991)	(1,290)	1,532	7,226	7,468	(2,523)
Opening general fund balance at 1 April 2025						(39,086)
Closing general fund balance at 31 March 2026						(41,609)

	2024/25					Net expenditure chargeable to the general fund £000
	Net expenditure in the comprehensive income and expenditure statement £000	Adjustments between the funding and accounting basis			Total Adjustments £000	
		Adjustments for capital purposes £000	Net change for the pensions adjustment £000	Other Differences £000		
Chief operating officer	6,219	(311)	154	-	(157)	6,062
Chief planning officer	3,523	(2,815)	68	-	(2,747)	776
Corporate leadership team	1,215	-	24	-	24	1,239
Corporate services	7,877	(307)	397	-	90	7,967
Economic development	214	-	5	-	5	219
Housing strategy	5,839	(5,862)	11	218	(5,633)	206
Leisure & health	876	(740)	106	-	(634)	242
Operations	7,452	(1,440)	146	-	(1,294)	6,158
Strategic insight & delivery	1,323	(648)	65	-	(583)	740
3CICT shared service	3,011	(197)	120	-	(77)	2,934
Net cost of services	37,549	(12,320)	1,096	218	(11,006)	26,543
Other income and expenditure	(49,124)	6,551	(180)	12,599	18,970	(30,154)
(Surplus)/deficit for the year	(11,575)	(5,769)	916	12,817	7,964	(3,611)
Opening general fund balance at 1 April 2024						(35,475)
Closing general fund balance at 31 March 2025						(39,086)

7.1.1 Adjustments for capital purposes

This column adds in depreciation and impairment and revaluation gains and losses in the services line, and for:

- **other operating expenditure** - adjusts for capital disposals with a transfer of income on disposal of assets and the amounts written off for those assets.
- **financing and investment income and expenditure** - the statutory charges for capital financing, i.e., minimum revenue provision, and other revenue contributions are deducted from other income and expenditure as these are not chargeable under generally accepted accounting practices.
- **taxation and non-specific grant income and expenditure** – capital grants are adjusted for income not chargeable under generally accepted accounting practices. Revenue grants are adjusted from those receivable in the year to those receivable without conditions or for which conditions were satisfied throughout the year. The taxation and non-specific grant income and expenditure line is credited with capital grants receivable in the year without conditions or for which conditions were satisfied in the year.

7.1.2 Net change for the pension's adjustment

Net change for the removal of pension contributions and the addition of IAS19 employee benefits pension related expenditure and income:

- for **services** this represents the removal of the employer pension contributions made by the Council as allowed by statute and the replacement with current service costs and past service costs.
- for **financing and investment income and expenditure** – the net interest on the defined benefit liability is charged to the comprehensive income and expenditure statement.

7.1.3 Other differences

Other differences between amounts debited/credited) to the comprehensive income and expenditure statement and amounts payable/(receivable) to be recognised under statute:

- For **financing and investment income and expenditure**, the other difference column recognises adjustments to the general fund for the timing differences for premiums and discounts.
- The charge under **taxation and non-specific grant income and expenditure** represents the difference between what is chargeable under statutory regulations for council tax and non-domestic rates that was projected to be received at the start of the year and the income recognised under generally accepted accounting practices in the code. This is a timing difference as any difference will be brought forward in future (surpluses) or deficits on the collection fund.

7.1.4 Segmental income

The table above shows net expenditure, the income analysed on a segmental basis is shown below:

2024/25		2025/26
£000		£000
(5,684)	Chief Digital & Information Officer	(6,020)
(1)	Chief Executive Officer	(8)
(27,299)	Customer Change Director	(24,219)
-	Head of Communications, Engagement & Public Affairs	-
(932)	Head of Democratic Services & Monitoring Officer	(721)
(3,168)	Head of Economy, Regeneration & Housing	(2,716)
(2,197)	Head of Environmental Services	(6,128)
5	Head of Finance	(199)
-	Head of Human Resources & Officer Development	(33)
(7,787)	Head of Leisure, Health & Environment	(8,830)
(5,541)	Head of Planning, Infrastructure & Public Protection	(7,023)
-	Head of Policy, Performance & Emergency Planning	(16)
(507)	Head of Property & Facilities	(627)
(53,111)		(56,540)

8. Expenditure and income analysed by nature

The Council's expenditure and income is analysed as follows:

2024/25		2025/26
£000		£000
	Expenditure	
32,769	Employees	37,130
18,709	Other service expenses	21,030
(874)	Support service recharges	(1,480)
11,385	Depreciation, amortisation, REFCUS & investment property fair value adjustment	7,910
390	Interest payments	391
3,810	Transfer & grant payments	4,210
10,729	Precepts & levies	11,308
-	Loss on disposal of fixed assets	-
26,067	Benefit payments	21,895
102,985	Total expenditure	102,394
	Income	
(31,222)	Fees, charges & other service income	(35,271)
(3,988)	Interest and investment income	(3,310)
(31,354)	Income from council tax & non-domestic rates	(29,945)
(229)	Post stock transfer capital receipts	(685)
(42,739)	Government grants & contributions	(39,224)
(175)	Proceeds from disposal of non-current assets	(89)
(4,853)	Levies	(3,831)
(114,560)	Total income	(112,355)
(11,575)	Surplus on the provision of services	(9,961)

9. Adjustments between accounting basis and funding basis under regulations

This note details the adjustments that are made to the total comprehensive income and expenditure recognised by the Council in the year in accordance with proper accounting practice to the resources that are made by statutory provisions as being available to the Council to meet future capital and revenue expenditure.

The following sets out a description of the reserves against which the adjustments are made.

- **General fund balance**
The general fund is the statutory fund into which all the receipts of the Council are required to be paid and out of which all liabilities of the Council are to be met, except to the extent that statutory rules might provide otherwise. These rules can also specify the financial year in which liabilities and payments should impact on the general fund balance, which is not necessarily in accordance with proper accounting practice. The general fund therefore summarises the resources that the Council is statutorily empowered to spend on its services or on capital investment.
- **Capital receipts reserve**
The capital receipts reserve holds the proceeds from the disposal of land or other assets, which are restricted by statute from being used other than to fund new capital expenditure or to be set aside to finance historic capital expenditure. The balance on the reserve shows the resources that have yet to be applied for these purposes at the year end.
- **Capital grants unapplied**
The capital grants unapplied account holds the grants and contributions received towards capital projects for which the Council has met the conditions that would otherwise require repayment of the monies, but which have yet to be applied to meet expenditure. The balance is restricted by grant terms as to the capital expenditure against which it can be applied and/or the financial year in which this can take place.

	2025/26		
	Usable reserves		
	General fund balance	Capital receipts reserve	Capital grants unapplied
	£000	£000	£000
Adjustments to the revenue resources			
Amounts by which the income and expenditure included in the comprehensive income and expenditure statement are difference from revenue for the year calculated in accordance with statutory requirements:			
• Pensions costs (transferred from the pensions reserve)	1,532	-	-
• Financial instruments (transferred to/(from) the financial instruments adjustments reserve)	(118)	-	-
• Council tax and NNDR (transferred from the collection fund adjustment account)	2,570	-	-
• Reversal of entries included in the deficit/(surplus) on the provision of services in relation to capital expenditure (these items are charged to the capital adjustment account)	(138)	-	(4,773)
Total adjustments to the revenue resources	3,846	-	(4,773)
Adjustments between revenue and capital resources			
Transfer of non-current asset sale proceeds from revenue to the capital receipts reserve	773	(773)	-
Statutory provision for the repayment of debt (transferred from the capital adjustment account)	2,865	-	-
Total adjustments between revenue and capital resources	3,638	(773)	-
Adjustments to capital resources			
Use of the capital receipts reserve to finance capital expenditure	-	774	-
Repayment of loans	(17)	(1)	-
Application of capital grants to finance capital expenditure	-	-	9,232
Total adjustments to capital resources	(17)	773	9,232
Total adjustments	7,468	-	4,459

2024/25		
Usable reserves		
General fund balance £000	Capital receipts reserve £000	Capital grants unapplied £000
Adjustments to the revenue resources		
Amounts by which the income and expenditure included in the comprehensive income and expenditure statement are difference from revenue for the year calculated in accordance with statutory requirements:		
• Pensions costs (transferred from the pensions reserve)	916	-
• Financial instruments (transferred to/(from) the financial instruments adjustments reserve)	79	-
• Council tax and NNDR (transferred from the collection fund adjustment account)	(683)	-
• Reversal of entries included in the deficit/(surplus) on the provision of services in relation to capital expenditure (these items are charged to the capital adjustment account)	4,431	-
	4,743	(13,421)
Total adjustments to the revenue resources		
Adjustments between revenue and capital resources		
Transfer of non-current asset sale proceeds from revenue to the capital receipts reserve		
	404	(404)
Statutory provision for the repayment of debt (transferred from the capital adjustment account)		
	2,823	-
Total adjustments between revenue and capital resources		
	3,227	(404)
Adjustments to capital resources		
Use of the capital receipts reserve to finance capital expenditure		
	-	261
Repayment of loans		
	(6)	(31)
Application of capital grants to finance capital expenditure		
	-	10,858
Total adjustments to capital resources		
	(6)	230
Total adjustments		
	7,964	(174)
		(2,563)

10. Movements in earmarked reserves

This note sets out the amounts set aside from general fund balances in earmarked reserves to provide financing for future expenditure plans and the amounts posted back from earmarked reserves to meet general fund expenditure in 2024/25 and 2025/26.

	Balance 1 April 2024	Transfers in 2024/25	Transfers out 2024/25	Balance 31 March 2025	Transfers in 2025/26	Transfers out 2025/26	Balance 31 March 2026
	£000	£000	£000	£000	£000	£000	£000
S.106 agreements	(949)	(275)	596	(628)	(447)	-	(1,075)
Commuted S.106 payments	(1,036)	(47)	90	(993)	11	-	(982)
Repairs & renewals fund	(4,038)	(83)	745	(3,376)	1,287	-	(2,089)
Strategic transformation reserve	(521)	-	185	(336)	48	-	(288)
Collection fund reserve	(2,348)	-	731	(1,617)	-	-	(1,617)
Commercial investment fund	(5,804)	(1,701)	70	(7,435)	-	-	(7,435)
Market towns investment fund	(379)	-	-	(379)	137	-	(242)
Budget surplus reserve	(6,872)	-	306	(6,566)	-	-	(6,566)
Special reserve	(656)	-	656	-	-	-	-
Local government reorganisation	-	(1,000)	-	(1,000)	(2,641)	-	(3,641)
Other reserves	(10,697)	(7,971)	4,087	(14,581)	(14,076)	13,132	(15,525)
	(33,300)	(11,077)	7,466	(36,911)	(15,681)	13,132	(39,460)

The following paragraphs provide an explanation of these reserves.

- S106 agreements - contains payments made by developers to meet their planning approval obligation to contribute to the funding of infrastructure and community requirements. As a relevant project is completed it is funded in all or part from this reserve.
- Commuted S106 payments - represents payments made by developers to meet their planning approval obligation to contribute to the funding of the maintenance of specified assets for a set period of years. As relevant maintenance costs are incurred funding is transferred from the reserve.
- Repairs and renewals funds - some services contribute an annual sum, and the funds are used to pay for one-off repair or renewal items, thereby smoothing the spending on large maintenance items.
- Strategic transformation reserve - to fund workflow streams associated with initiatives to improve the efficiency of the Council.
- Collection fund - excess non-domestic rates and council tax received from the collection fund due to be repaid in future years.
- Commercial investment fund - revenue allocation to meet future investment in commercial investment strategy.
- Market towns investment fund - a fund to support the redevelopment of Huntingdonshire's market towns.
- Budget surplus reserve - contains surplus funds that exceed the £2,175,000 maximum threshold for the general fund balance.
- Other reserves - this is a summary of other less significant reserves that support on-going service activity, including local plan activity, district council elections, new trading company, community infrastructure levy administration, IT projects, housing support, community support projects and landlord activities.

11. Other operating income and expenditure

2024/25		2025/26
£000		£000
9,061	Parish precepts	10,032
(229)	Post stock transfer capital receipts	(685)
609	Drainage board levies	632
(175)	Gain on the disposal of non-current assets	(56)
9,266		9,923

2. Financing and investment income and expenditure

2024/25		2025/26
£000		£000
390	Interest payable and similar charges	390
183	Pensions interest cost and expected return on pensions assets	937
(3,988)	Interest receivable	(3,309)
(5,939)	Income and expenditure in relation to investment properties and changes in their fair value	(4,376)
(1,420)	Other investment, trading operations and shared services	(1,615)
(10,774)		(7,973)

13. Taxation and non-specific grant income

2024/25		2025/26
£000		£000
(19,653)	Council tax income	(20,897)
(11,701)	Non-domestic rates	(9,048)
(2,965)	Non-ringfenced government grants	(7,806)
(3,365)	Developer contributions (CIL & s.106)	(2,493)
(9,932)	Capital grants	(2,585)
(47,616)		(42,829)

14. Property, plant and equipment**14.1 Measurement bases used**

The gross carrying amount of assets has been determined on the following bases:

- land and buildings - existing use value
- vehicles, plant and equipment - depreciated historic cost
- infrastructure assets - depreciated historic cost
- community assets - historic cost
- surplus assets – fair value
- assets under construction - historic cost

14.2 Depreciation methods used

Depreciation is calculated on a straight-line basis over the useful life of an asset.

14.3 Useful lives or depreciation rates used

The useful life of an asset is the period over which it is expected to deliver productive benefit to the Council.

The following useful lives have been used in the calculation of depreciation:

- other land and buildings – 10 to 50 years
- vehicles, plant, furniture & equipment – 2 to 25 years
- infrastructure assets – 10 to 40 years

14.4 Effects of changes in estimates

Assets are depreciated over useful lives that are dependent on assumptions about the level of repairs and maintenance that will be incurred in relation to individual assets. The current economic climate makes it uncertain that the Council will be able to sustain its current spending on repairs and maintenance, bringing into doubt the useful lives assigned to assets. If the useful life of assets is reduced, depreciation increases and the carrying amount of the assets falls

14.5 Revaluations

The Council carries out a rolling programme that ensures that all property, plant and equipment required to be measured at fair value is revalued at least once every three years. Valuations of land and buildings are carried out in accordance with the methodologies and bases for estimation set out in the professional standards of the Royal Institution of Chartered Surveyors.

In accordance with the CIPFA Code of Practice, which introduced changes to the valuation on non-current assets, a proportion of the Councils assets were subject to full valuation during the year. Assets that were not

revalued have been reviewed using appropriate indices, in line with the Code requirements. None of the asset's values materially changed.

The market review takes a broader view of the way in which material or economic factors may have affected the overall levels of value which are stated in the accounts, to reflect a true position and give an impairment allowance (where required) against the 2025/26 accounts.

The valuations at 31 March 2026 have been carried out by Wilks, Head & Eve LLP, who also prepared a valuation report.

The significant assumptions applied in estimating fair values are:

- operational assets – the total value has been apportioned between land and building parts, with the building representing the depreciable amount;
- vehicles, plant, equipment and infrastructure assets are valued at historic cost, as at the date of acquisition and subsequent capital enhancement expenditure less depreciation. Community assets, and assets under construction are valued at historic cost at the date of acquisition and subsequent capital enhancement. Consequently, there is no ongoing revaluation review for these assets.
- assets surplus to requirements – these have been assessed to fair value on the basis of market value.

	Other land & buildings £000	Vehicles, plant, furniture & equipment £000	Infrastructure assets £000	Community assets £000	Surplus assets £000	Assets under construction £000	Total PP&E £000
Carried at historical cost	-	12,990	3,342	1,223	-	6,736	24,291
Valued at current cost as at:							
31 March 2026	39,687						39,687
31 March 2025	22,543	-	-	-	-	-	22,543
31 March 2024	13,217	-	-	-	2,374	-	15,591
Total cost or valuation	75,447	12,990	3,342	1,223	2,374	6,736	102,112

14.6 Capital commitments

On 31 March 2026 the Council was contractually committed to capital works valued at approximately £10,164,340 (31 March 2025 £8,422,000). The schemes are listed in the table below:

Service	Scheme	31 March 2026	
		£000	
Chief operating officer	Disabled Facilities Grants	407	
Corporate services	Hinchingbrooke Country Park	72	
	St Neots Riverside Park Path/Cycle Imps	6	
	Replacement Income Management System	0	
	REPF Capacity Building	4	
	Solar Canopy and Triple Glazed Windows	6	
	OLH and OLR refurbishment	10	
	OL Roof Mounted Solar	3	
	Old Falcon (Future High Streets)	6	
	Priory Centre & Qtr (Future High Streets)	55	
	Server 2016 Migration	28	
	CCTV Hardware and System Software Update	1	
	Huntingdon Sport & Health Hub	1	
	OLSIO - 3G Pitch (2026)	2	
	Housing strategy	Hinchingbrooke Country Park	43
		Datacentre Racks	1
UK Shared Prosperity Fund		20	
Ramsey Market Hub/Public Realm/Food Hall		107	
Public Switched Telephone Network (PSTN)		2	
Market Town St Ives (CLOSE AT Y/E)		0	
Old Falcon (Future High Streets)		26	
Priory Centre & Qtr (Future High Streets)		5,868	
Market Towns Ramsey St Ives Huntingdon		1,726	
Transport Project (Future High Streets)		303	
Leisure & health	Hinchingbrooke Country Park	2	
	Leisure Cents - Future Improve	55	
	Fareham Offices Capital Works	46	
	St Neots Riverside Changing Places	2	
	OL St Neots Synthetic Pitch	7	
	OL Sawtry - Plant Reinstall	31	
	Operations	Vehicles & Plant	717
Wheeled Bins		54	
Strategic insight & delivery	Hinchingbrooke Country Park	1	
	Secure Cycle Storage	4	
	St Neots Riverside Park Path/Cycle Imps	4	
	Re-Letting Enhancement Works	2	
	Huntingdon Sport & Health Hub	12	
3CICT shared service	Leisure Cents - Future Improve	41	
	Hardware Replacement (HDC IT)	351	
	Datacentre Racks	16	
	Replacement Income Management System	33	
	Food Waste Collection	1	
	Audio Visual Equipment	0	
	OL Sawtry - Plant Reinstall	14	
	Hinchingbrooke Inflatable AquaPark	74	
Grand Total		10,164	

14.7 Movement on property, plant and equipment

	Other land & buildings £000	Vehicles, plant, furniture & equipment £000	Infrastructure assets £000	Community assets £000	Surplus assets £000	Assets under construction £000	Total PP&E £000
Cost or valuation							
At 1 April 2025	73,995	26,312	9,011	1,117	2,374	2,004	114,813
Additions	924	5,462	-	105	-	4,899	11,390
Revaluation increases recognised in the revaluation reserve	3,675	-	-	-	-	-	3,675
Revaluation decreases/reversals recognised in the revaluation reserve	(534)	-	-	-	-	-	(534)
Revaluation increases recognised in the surplus on the provision of services	443	-	-	-	-	-	443
Revaluation decreases recognised in the surplus on the provision of services	(111)	-	-	-	-	-	(111)
Derecognition - disposals	-	(1,011)	(139)	-	-	-	(1,150)
Reclassification of assets as REFCUS	-	-	-	-	-	-	-
Reclassification of assets as investment property	-	-	-	-	-	-	-
Other movements in cost or valuation	(2,378)	-	-	-	-	(167)	(2,545)
At 31 March 2026	76,014	30,763	8,872	1,222	2,374	6,736	125,981
Accumulated depreciation							
At 1 April 2025	(1,503)	(17,011)	(5,338)	-	-	-	(23,852)
Depreciation charge for the year	(1,032)	(1,773)	(330)	-	-	-	(3,135)
Depreciation written back on revaluation	1,968	-	-	-	-	-	1,968
Derecognition - disposals	-	1,011	139	-	-	-	1,150
Other movements	-	-	-	-	-	-	-
At 31 March 2026	(567)	(17,773)	(5,529)	-	-	-	(23,869)
Net book value							
At 31 March 2026	75,447	12,990	3,343	1,222	2,374	6,736	102,112
At 1 April 2025	72,492	9,301	3,673	1,117	2,374	2,004	90,961

	Other land & buildings £000	Vehicles, plant, furniture & equipment £000	Infrastructure assets £000	Community assets £000	Surplus assets £000	Assets under construction £000	Total PP&E £000
Cost or valuation							
At 1 April 2024	69,926	23,824	9,367	451	2,374	1,136	107,078
Additions	809	3,194	-	667	-	868	5,538
Revaluation increases recognised in the revaluation reserve	6,924	-	-	-	-	-	6,924
Revaluation decreases/reversals recognised in the revaluation reserve	(3,656)	-	-	-	-	-	(3,656)
Revaluation increases recognised in the surplus on the provision of services	684	-	-	-	-	-	684
Revaluation decreases recognised in the surplus on the provision of services	(320)	-	-	-	-	-	(320)
Derecognition - disposals	-	(706)	(356)	-	-	-	(1,062)
Other movements in cost or valuation	(372)	-	-	(1)	-	-	(373)
At 31 March 2025	73,995	26,312	9,011	1,117	2,374	2,004	114,813
Accumulated depreciation							
At 1 April 2024	(1,110)	(15,963)	(5,342)	-	-	-	(22,415)
Depreciation charge for the year	(1,121)	(1,754)	(352)	-	-	-	(3,227)
Depreciation written back on revaluation	356	-	-	-	-	-	356
Derecognition - disposals	-	706	356	-	-	-	1,062
Other movements	372	-	-	-	-	-	372
At 31 March 2025	(1,503)	(17,011)	(5,338)	-	-	-	(23,852)
Net book value							
At 31 March 2025	72,492	9,301	3,673	1,117	2,374	2,004	90,961
At 1 April 2024	68,816	7,861	4,025	451	2,374	1,136	84,663

15. Investment properties

The following items of income and expense have been accounted for in the financing and investment income and expenditure line in the comprehensive income and expenditure statement:

2024/25		2025/26
£000		£000
(4,783)	Rental income from investment property	(4,250)
1,690	Direct operating expenses arising from investment property	1,531
(3,093)		(2,719)
(2,846)	Net losses from fair value adjustments	(526)
(5,939)		(3,246)

There are no restrictions on the Council's ability to realise the value inherent in its investment property or on the Council's right to the remittance of income and the proceeds of disposal. The Council has no contractual obligations to purchase, construct or develop investment property or carry out repairs, maintenance or enhancement.

The following table summarises the movement in the fair value of investment properties over the year:

2024/25		2025/26
£000		£000
70,285	Balance at 1 April	73,201
70	Additions	57
2,846	Net (losses)/gains from fair value adjustments	526
-	Transfers from property, plant and equipment	533
73,201	Balance at 31 March	74,317

Valuation techniques

There has been no change in valuation techniques used during the year for valuing investment properties. The fair value is measured on an annual basis as at 31 March. In estimating the fair value of the Council's investment properties, the highest and best use of the properties is their current use.

Fair value hierarchy

To increase the consistency and comparability in fair value measurements, the method by which fair values are assessed are separated into three levels. The three levels are based on the inputs to the valuation techniques that are used to measure fair value.

- **Level 1 inputs**
Quoted prices in active markets for identical assets or liabilities that the Council can access at the measurement date.
- **Level 2 inputs**
Inputs (other than quoted prices within level 1) that are observable for the asset or liability, either directly or indirectly.
- **Level 3 inputs**
Unobservable inputs for the asset or liability.

Details of how the fair value hierarchy inputs apply to the Council's investment properties are demonstrated in the table below:

Fair value inputs level 2 other significant observable inputs at 31 March 2025		Fair value inputs level 2 other significant observable inputs at 31 March 2026
£000	Asset type	£000
9,454	Retail	9,826
17,731	Office	17,881
46,016	Commercial	46,610
73,201		74,317

The Council has no level 1 and 3 fair value inputs.

Transfers between levels of the fair value hierarchy

There were no transfers between levels during the year.

Significant observable inputs level 2

The fair value of investment properties is based on the income approach, where expected cash flows are discounted (using a market-derived discount rate) to establish the present value of the net income stream.

16. Intangible assets

The Council accounts for software as an intangible asset. Intangible assets include both purchased licenses and internally generated software.

All software is given a finite useful life, based on the period that the software is expected to be of use to the Council. The useful life assigned to software is generally 5 years.

Amortisation of £176,000 was charged to revenue in 2025/26 using the straight line method.

The movement on intangible asset balances during the year is as follows:

2024/25		2025/26
£000		£000
	Balance at start of year	
2,860	Gross carrying amounts	2,704
(2,219)	Accumulated amortisation	(2,187)
641	Net carrying amount at start of year	517
72	Additions	223
(228)	Disposals or retirements	87
(196)	Amortisation for the period	(176)
228	Reversal of amortisation on disposals or retirements	(87)
517	Net carrying amount at end of year	564
	Comprising:	
2,704	Gross carrying amounts	3,014
(2,187)	Accumulated amortisation	(2,450)
517		564

17.2 Income, expenses, gains and losses

2024/25			2025/26	
Financial assets: loans and receivable £000	Financial liabilities: liabilities measured at amortised cost £000		Financial assets: loans and receivable £000	Financial liabilities: liabilities measured at amortised cost £000
-	391	Interest expense	-	390
(3,988)	-	Interest income	(3,309)	-
(3,988)	391	Net loss/(gain) for the year	(3,309)	390

17.3 Fair values of assets and liabilities

Financial instruments, not classified at amortised cost, are carried at fair value, taken from the market price. The fair values have been estimated by calculating the net present value of the remaining contractual cash flows on 31 March 2026, using the following methods and assumptions:

- loan contracts have been discounted at market interest rates for instruments of similar credit quality and remaining term to maturity.
- CCLA property fund is in a form of shares which are actively traded and have a market price. The net asset value quoted as at the end of trading on 31 March 2026 was used in evaluating this fund.

Financial instruments, classified at amortised cost, are carried at amortised cost using the net present value of remaining contractual cash flows on 31 March 2026 using the following methods and assumptions:

- loans borrowed by the Council have been valued by discounting the contractual cash flows over the whole life of the instrument at the appropriate market rate for local Council loans.
- the fair values of other long-term loans and investments have been discounted at the market rates for similar instruments with similar remaining terms to maturity on 31 March 2026.
- no early repayment or impairment is recognised for any financial instrument.
- the fair value of short-term instruments, including trade payables and receivables, is assumed to approximate to the carrying amount given the low and stable interest rate environment.

IFRS 13 introduces a three level of hierarchy for the inputs into fair value calculations:

- level 1- quoted prices in active markets for identical assets or liabilities
- level 2 - inputs other than quoted prices that are observable for the asset or liability
- level 3 - unobservable inputs for the asset.

Short term debtors and creditors are carried at cost as this is a fair approximation of their value.

31 March 2025			31 March 2026	
Carrying amount £000	Fair value £000		Carrying amount £000	Fair value £000
		Assets		
65,940	64,503	Loans and receivables	60,994	60,994
		Liabilities		
(43,100)	(32,357)	Financial liabilities	(44,073)	(33,346)

31 March 2024			31 March 2025		
Carrying amount £000	Fair value £000		Fair value level	Carrying amount £000	Fair value £000
		Financial liabilities held at amortised cost			
(34,255)	(23,966)	Long term loans from PWLB	2	(34,303)	(23,576)
(34,255)	(23,966)	Total		(34,303)	(23,576)
(8,391)	(8,391)	Liabilities for which fair value is not disclosed		(9,770)	(9,770)
(42,646)	(32,357)	Total financial liabilities		(44,073)	(33,346)
		<i>Recorded on the balance sheet as:</i>			
(7,579)	(7,579)	Short term creditors		(8,967)	(8,967)
(268)	(268)	Short term borrowing		(260)	(260)
(7,847)	(7,847)	Short term financial liabilities		(9,227)	(9,227)
(34,255)	(23,966)	Long term borrowing		(34,303)	(23,576)
(544)	(544)	Other long term liabilities		(543)	(543)
(34,799)	(24,510)	Long term financial liabilities		(34,846)	(24,119)
(42,646)	(32,357)	Total financial liabilities		(44,073)	(33,346)
		Financial assets held at fair value through other comprehensive income			
3,651	3,651	Property fund	1	3,650	3,650
		Financial assets held at amortised cost			
47,750	47,750	Short term investment	1	46,300	46,300
51,401	51,401	Total		49,950	49,950
13,102	13,102	Assets for which fair value is not disclosed		11,044	11,044
64,503	64,503	Total financial assets		60,994	60,994
		<i>Recorded on the balance sheet as:</i>			
9,493	9,493	Short term debtors		7,435	7,435
47,750	47,750	Short term investments		46,300	46,300
57,243	57,243	Short term financial assets		53,735	53,735
3,609	3,609	Long term debtors		3,609	3,609
3,651	3,651	Long term investments		3,650	3,650
7,260	7,260	Long term financial assets		7,259	7,259
64,503	64,503	Total financial assets		60,994	60,994

The fair value of short-term financial liabilities held at amortised cost, including trade payables, is assumed to approximate to the carrying amount.

The fair value of financial liabilities held at amortised cost is higher than their balance sheet carrying amount because the Council's portfolio of loans includes loans where the interest rate payable is lower than the current rates available for similar loans as at the balance sheet date.

The financial liabilities are shown below:

31 March 2025				31 March 2026	
£000				£000	
		Long term			
(5,000)	PWLB - 3.91%	19/12/2008 to 19/12/2057		(5,000)	
(5,000)	PWLB - 3.90%	19/12/2008 to 19/12/2058		(5,000)	
(5,000)	PWLB - 2.78%	02/10/2017 to 02/10/2037		(5,000)	
(7,292)	PWLB - 2.49%	11/03/2019 to 11/03/2039		(7,292)	
(11,963)	PWLB - 2.18%	26/06/2019 to 26/06/2039		(11,963)	
-	Salix			-	
(34,255)				(34,255)	

18. Inventories

2024/25				2025/26				
Leisure centres £000	Diesel £000	Other £000	Total £000		Leisure centres £000	Diesel £000	Other £000	Total £000
36	25	152	213	Balance at 1 April	31	42	153	226
-	553	-	553	Purchases	-	729	-	729
-	(607)	-	(607)	Recognised as an expense in year	-	(723)	-	(723)
(5)	71	1	67	Stock adjustment	(3)	-	42	39
31	42	153	226	Balance at 31 March	28	48	195	271

Other inventories comprise refuse sacks, staff uniforms and IT hardware.

19. Short term debtors

31 March 2025		31 March 2026	
£000		£000	
2,055	Central government bodies	1,383	
6,913	Other local authorities	2,462	
35	NHS bodies	-	
9,563	Other entities and individuals	12,245	
18,566		16,090	
(2,220)	Expected credit losses	(2,258)	
16,346		13,832	

20. Cash and cash equivalents

31 March 2025		31 March 2026
£000		£000
9	Cash held	7
497	Bank balances	390
17,363	Short term deposits	19,403
<u>17,869</u>		<u>19,800</u>
(2,278)	Bank overdraft	(1,865)
<u>15,591</u>		<u>17,935</u>

21. Assets held for sale

Assets held for sale are expected to be sold within twelve months of the balance sheet date. The asset is carried at carrying value or expected sale proceeds, whichever is lower.

31 March 2025		31 March 2026
£000		£000
-	Balance at 1 April	-
-	Reclassification of assets as property, plant & equipment	2,925
<u>-</u>	Balance at 31 March	<u>2,925</u>

22. Short term creditors

31 March 2025		31 March 2026
£000		£000
	Creditors and receipts in advance	
(6,357)	Central government bodies	(7,658)
(1,810)	Other local authorities	(1,469)
(270)	NHS bodies	(270)
	Public corporations and trading funds	-
(9,190)	Other entities and individuals	(9,538)
<u>(17,627)</u>		<u>(18,935)</u>
	Capital grants and other receipts in advance	
(2,842)	Central government bodies	(2,719)
<u>(20,469)</u>		<u>(21,654)</u>

23. Usable reserves

Movements in usable reserves are summarised below:

	31 March 2024	Movements		31 March 2025	Movements		31 March 2026
	£000	£000	£000	£000	£000	£000	£000
General fund	(2,175)	139,666	(139,666)	(2,175)	133,783	(133,784)	(2,175)
Capital receipts reserve	(4,547)	261	(435)	(4,721)	774	(774)	(4,721)
Capital grants unapplied	(56,767)	10,858	(13,421)	(59,330)	9,232	(4,773)	(54,871)
Earmarked reserves	(33,300)	7,466	(11,077)	(36,911)	13,132	(15,681)	(39,460)
	(96,789)	158,251	(164,599)	(103,137)	156,922	(155,012)	(101,228)

24. Unusable reserves

Movements in unusable reserves are summarised below:

	31 March 2024	Movements		31 March 2025	Movements		31 March 2026
	£000	£000	£000	£000	£000	£000	£000
Capital adjustment account	(43,325)	14,632	(19,698)	(48,391)	11,047	(19,110)	(56,454)
Revaluation reserve	(41,521)	3,750	(7,223)	(44,994)	643	(5,108)	(49,459)
Financial instruments adjustment account	95	-	(341)	(246)	-	49	(197)
Financial instruments revaluation reserve	156	304	(111)	349	-	-	349
Deferred capital receipts	30	-	-	30	-	-	30
Pensions reserve	4,291	18,489	(5,354)	17,426	3,928	(17,393)	3,961
Collection fund adjustment account	3,057	683	-	3,740	(2,570)	-	1,170
	(77,217)	37,858	(32,727)	(72,086)	13,048	(41,562)	(100,600)

24.1 Capital adjustment account

The capital adjustment account absorbs the timing differences arising from the different arrangements for accounting for the consumption of non-current assets and for financing the acquisition, construction or enhancement of those assets under statutory provisions. The account is debited with the cost of acquisition, construction or enhancement as depreciation, impairment losses and amortisations are charged to the comprehensive income and expenditure statement (with reconciling postings from the revaluation reserve to convert fair value figures to a historical cost basis). The account is credited with the amounts set aside by the Council as finance for the costs of acquisition, construction, and enhancement.

The account contains accumulated gains and losses on investment properties and gains recognised on donated assets that have yet to be consumed by the Council. The account also contains revaluation gains accumulated on property, plant and equipment before 1 April 2007, the date that the revaluation reserve was created to hold such gains. Note 9 provides details of the source of all the transactions posted to the account, apart from those involving the revaluation reserve.

2024/25			2025/26	
£000	£000		£000	£000
	(43,325)	Balance at 1 April		(48,391)
		Reversal of items relating to capital expenditure debited to the comprehensive income and expenditure statement		
3,227		Charges for depreciation of non-current assets	3,136	
196		Amortisation of intangible assets	176	
(364)		Revaluation increases recognised in the surplus on the provision of services	(269)	
(2,846)		Movement in the market value of investment properties recognised in the surplus on the provision of services	(1,657)	
11,172		Revenue expenditure funded from capital under statute	6,555	
-		Amounts of non-current assets written off on disposal or sale as part of the gain on disposal to the comprehensive income and expenditure statements		
-		Adjusting amounts written out to deferred capital receipts	-	
(151)		Adjusting amounts written out of the revaluation reserve	(643)	
-		Net amount written out amount of the non-current assets consumed in the year	-	
		Reversal of value of leased property (Phoenix Court)	1,130	
		Capital financing applied in the year		
(261)		Use of the capital receipts reserve to finance new capital expenditure	(774)	
(2,050)		Capital grants and contributions credited to the comprehensive income and expenditure statement that have been applied to capital financing	(1,901)	
(10,858)		Application of grants to capital financing from the capital grants unapplied account and earmarked reserves	(8,732)	
(2,823)		Statutory provision for the financing of capital investment charged against the general fund	(2,865)	
37		Repayment of long term debtors	18	
(345)		Capital expenditure charged to general fund	(2,258)	
-		Derecognition of assets	33	
		Addition of leased assets (Car Parks) at peppercorn rent	(11)	
	<u>(5,066)</u>	Net movements		(8,063)
	<u>(48,391)</u>	Balance at 31 March		(56,454)

24.2 Revaluation reserve

The revaluation reserve contains the gains arising from increases in the value of its property, plant, and equipment. The balance is reduced when assets with accumulated gains are:

- revalued downwards or impaired and the gains are lost;
- used in the provision of services and the gains are consumed through depreciation; or
- disposed of and the gains are realised.

The reserve contains only revaluation gains accumulated since 1 April 2007, the date that the reserve was created. Accumulated gains arising before that date are consolidated into the balance on the capital adjustment account.

2024/25			2025/26	
£000	£000		£000	£000
	(41,521)	Balance at 1 April		(44,994)
(7,223)		Upward revaluation of assets	(5,108)	
3,599		Downward revaluation or impairment of assets not charged to the surplus on the provision of services	-	
	(3,624)	Surplus on revaluation of non-current assets not posted to the surplus on the provision of services		(5,108)
	151	Difference between fair value depreciation and historical cost depreciation - amounts written off to the capital adjustment account		643
	(44,994)	Balance at 31 March		(49,459)

24.3 Financial instruments adjustment account

The financial instruments adjustment account absorbs the differences between accounting for the fair value of loans given to individuals and organisations, and the actual income credited to the general fund. The fair value of car loans was immaterial and has not been included.

2024/25			2025/26	
£000			£000	
	95	Balance at 1 April		(246)
(304)		Correction to categorisation of financial instruments	-	
(37)		Amount by which finance costs charged to the comprehensive income and expenditure statement are different from the finance costs chargeable in the year in accordance with statutory requirements	49	
	(246)	Balance at 31 March		(197)

24.4 Financial instruments revaluation reserve

These financial instruments are carried at their fair value. Movements in fair value are posted to the financial instruments revaluation reserve and taken to the deficit on the revaluation of financial assets (FVOCI elected) line in the comprehensive income and expenditure statement.

2024/25		2025/26
£000		£000
156	Balance at 1 April	349
304	Correction to categorisation of financial instruments	-
(111)	Revaluation of investments	-
349	Balance at 31 March	349

24.5 Deferred capital receipts reserve

The deferred capital receipts reserve holds the gains recognised on the disposal of non-current assets but for which cash settlement has yet to take place. Under statutory arrangements, the Council does not treat these gains as usable for financing new capital expenditure until they are backed by cash receipts. When the deferred cash settlement eventually takes place, amounts are transferred to the capital receipts reserve.

2024/25		2025/26
£000		£000
30	Balance at start and end of year	30

24.6 Pensions reserve

The pensions reserve absorbs the timing differences arising from the different arrangements for accounting for post-employment benefits and for funding benefits in accordance with statutory provisions. The Council accounts for post-employment benefits in the comprehensive income and expenditure statement as the benefits are earned by employees accruing years of service, updating the liabilities recognised to reflect inflation, changing assumptions and investment returns on any resources set aside to meet the costs.

However, statutory arrangements require benefits earned to be financed as the Council makes employer's contributions to pension funds or eventually pays any pensions for which it is directly responsible. In 2025/26, the actuarial valuation has seen a small increase in the asset surplus. Under the International Accounting Standard (IAS19) the Council must disclose the lower of the actuarial valuation or asset ceiling calculation. The asset ceiling calculation resulted in a lower valuation and has therefore been included within the accounts for 2025/26

2024/25		2025/26
£000		£000
4,291	Balance at 1 April	17,426
14,051	Actuarial (gains)/losses on pensions assets and liabilities	(11,933)
4,438	Reversal of items related to retirement benefits debited or credited to the comprehensive income and expenditure statement	3,928
(5,354)	Employer's contributions and direct payments to pensioners payable in year	(5,460)
17,426	Balance at 31 March	3,961

24.7 Collection fund adjustment account

The collection fund adjustment account manages the differences arising from the recognition of council tax income in the comprehensive income and expenditure statement as it falls due from council tax payers compared with the statutory arrangements for paying across amounts to the general fund from the collection fund.

2024/25		2025/26
£000		£000
3,057	Balance at 1 April	3,740
	Amount by which council tax income and non-domestic rates income credited to the comprehensive income and expenditure statement is different from council tax and non-domestic rates calculated for the year in accordance with statutory requirements	
683		(2,570)
3,740	Balance at 31 March	1,170

25. Cash flow statement

25.1 Adjustments to net deficit on the provision of services for non-cash movements

2024/25		2025/26
£000		£000
3,227	Depreciation	3,136
(364)	Impairment and revaluations	(643)
196	Amortisation	176
(2,389)	Decrease in creditors	(1,126)
255	Decrease in debtors	1,338
(13)	Decrease/(increase) in inventories	(44)
(916)	Pension liability	(1,532)
-	Carrying amount of non-current assets sold	-
(2,045)	Other non-cash items charged to the net surplus or deficit on the provision of services	(1,425)
(2,049)		(120)

25.2 Adjustments for items included in the net deficit on the provision of services that are investing and financing activities

2024/25		2025/26
£000		£000
(403)	Proceeds from the sale of property plant and equipment, investment property and intangible assets	(774)
(15,471)	Any other items for which the cash effects are investing or financing cash flows	(4,773)
(15,874)		(5,547)

25.3 Operating activities

Operating activities within the cash flow statement include the following cash flows:

2024/25			2025/26	
£000			£000	
4,025	Interest received		3,272	
(390)	Interest paid		(390)	

26. Cash flow statement - investing activities

2024/25			2025/26	
£000			£000	
(5,548)	Purchase of property, plant and equipment, investment property and intangible assets		(11,083)	
(2,150)	Purchase of short term and long term investments		1,450	
(1,178)	Other payments for investing activities		-	
403	Proceeds from the sale of property, plant and equipment, investment property and intangible assets		774	
15,475	Other receipts from investing activities		4,839	
7,002			(4,019)	

27. Cash flow statement - financing activities

2024/25			2025/26	
£000			£000	
(24)	Other payments for financing activities		(24)	
(8)	Movements in of short- and long-term borrowing		40	
653	Council tax and non-domestic rates adjustments		2,704	
621			2,720	

28. Reconciliation of liabilities arising from financing activities

	01 April 2025	Financing cash flows	Changes which are not financing cash flows		31 March 2026
			Acquisition	Other non- financing cash flows	
	£000	£000	£000	£000	£000
Long term borrowings	(34,255)	-	-	(48)	(34,303)
Short term borrowings	(268)	(40)	-	48	(260)
Lease liabilities	(544)	-	-	-	(544)
Total liabilities from financing activities	(35,067)	(40)	-	-	(35,107)

	01 April 2023	Financing cash flows	Changes which are not financing cash flows		31 March 2024
			Acquisition	Other non- financing cash flows	
	£000	£000	£000	£000	£000
Long term borrowings	(34,263)	-	-	8	(34,255)
Short term borrowings	(268)	8	-	(8)	(268)
Lease liabilities	(544)	-	-	-	(544)
Total liabilities from financing activities	(35,075)	8	-	-	(35,067)

29. Members' allowances

The Council paid the following amounts to members of the Council during the year:

2024/25		2025/26	
£000		£000	
436	Allowances	428	
3	Expenses	4	
439		432	

30. Officers' remuneration

30.1 Senior officers' remuneration

There is a requirement to disclose the individual remuneration of senior officers (those whose remuneration is more than £50,000 and are a designated head of a paid service and/or have responsibility for the management of the Council). The following table sets out the remuneration for senior officers whose salary is above £50,000 or, where employed during the financial year, for those earning more than £150,000 (excluding pension contributions) then they must be named.

	2025/26				
	Salary (including allowances)	Election fees	Total remuneration excluding pension contributions	Employer pension contributions	Total remuneration including pension contributions
	£000	£000	£000	£000	£000
Chief executive officer	143	15	158	25	182
Deputy Chief Executive and Corporate Director - Place (1)	117	-	117	20	138
Corporate Director - Finance & Resources (S151) (2)	93	1	94	11	105
Interim Corporate Director - Finance & Resources (S151) (3)	96	-	96	-	96
Chief Information Officer	123	-	123	21	145
Corporate Director - Communities	94	1	95	16	112

Key:

(1) Corporate Director - Place, was uplifted to Deputy Chief Executive resulting in additional Market Supplement, from 20/06/2025.

(2) Corporate Director - Finance & Resources (S151) left on 24/10/2025.

(3) Interim Corporate Director - Finance & Resources (S151) - via Agency - started on 20/10/2025

	2024/25				
	Salary (including allowances)	Election fees	Total remuneration excluding pension contributions	Employer pension contributions	Total remuneration including pension contributions
	£000	£000	£000	£000	£000
Chief executive officer	138	9	147	24	171
Corporate director - place	113	-	113	20	133
Corporate director - people (1)	96	1	97	8	105
Corporate director - communities	89	1	90	15	105
Corporate director - finance & resources & s151 officer (3)	54	-	54	9	63
Director of finance & corporate resources - s151 officer (4)	30	1	31	5	36

(1) Left 30/09/2024

(2) Previously chief operating officer

(3) Started 02/10/2024

(4) Left 30/06/2024

30.2 Officers' remuneration

The Council's other employees receiving more than £50,000 remuneration for the year (excluding employer's pension contributions) were paid the following amounts:

2024/25		2025/26	
Number of employees		Number of employees	
23	£50,000 - £54,999	27	
15	£55,000 - £59,999	16	
14	£60,000 - £64,999	17	
3	£65,000 - £69,999	7	
6	£70,000 - £74,999	6	
3	£75,000 - £79,999	3	
1	£80,000 - £84,999	5	
1	£95,000 - £99,999	1	
1	£100,000 - £104,999	-	
67		82	

31. External audit costs

The Council has incurred the following costs in relation to the audit of the statement of accounts, certification of grant claims and statutory inspections and to non-audit services provided by the Council's external auditors:

2024/25		2025/26
£000		£000
167	Fees payable to the appointed auditor with regard to external audit services	171
26	Fees payable to the appointed auditor for the certification of grant claims and returns for the year	26
193		197

32. Grant income

The Council credited the following revenue grants and contributions to the comprehensive income and expenditure statement:

2024/25		2025/26
£000		£000
	Credited to taxation and non specific grant income	
(1,699)	New homes bonus	(1,472)
(1,266)	Other non-ringfenced grants	(6,334)
(9,932)	Capital grants	(2,585)
(12,897)		(10,391)
	Credited to services	
(24,005)	Rent allowances	(20,046)
(284)	Benefits administration	(295)
(1,899)	Improvement grants	(1,800)
(3,654)	Other grants	(6,692)
(29,842)		(28,833)

The Council has received some grants that have yet to be recognised as income as they have conditions attached to them that may require the monies to be returned. The balances at the year-end are as follows:

31 March 2025		31 March 2026
£000		£000
	Capital	
(2,842)	Cambridgeshire Horizons - Other	(2,719)
(2,842)		(2,719)

The Council has received some grants that have no conditions attached; they have been recognised as income but are held in the capital receipts unapplied account pending their use to fund the relevant capital scheme. The balances at the year-end are as follows:

31 March 2025		31 March 2026
£000		£000
(1)	Building foundations from growth	(1)
(85)	Changing Places	-
(54,915)	Community infrastructure levy	(54,209)
(1,802)	Food waste collection	-
(1,141)	Future high streets	-
(48)	Godmanchester doctor's surgery	(48)
(17)	Home office reserve	(17)
(856)	Housing fund	(205)
(155)	Huntingdon on-street wi-fi	(155)
(119)	Insurance contribution	(119)
(25)	Ramsey produce hub	(13)
(98)	Shop fronts	-
(10)	St Ives highways improvement	-
(37)	St Neots digital information	-
(20)	Vibrant communities	-
(1)	Other	(2)
	Biodiversity For All	(102)
(59,330)		(54,871)

33. Related party transactions

The Council must disclose in the accounts any material transactions with related parties. Related parties are bodies or individuals that have the potential to control or influence the Council or to be controlled or influenced by the Council. Disclosure of these transactions allows readers to assess the extent to which the Council might have been constrained in its ability to operate independently.

Central Government has significant influence over the general operations of the Council. It is responsible for providing the statutory framework within which the Council operates, provides a significant amount of its funding in the form of grants and prescribes the terms of many of the transactions that the Council has with other parties e.g., Council tax bills.

Members of the Council have direct control over the Council's financial and operating policies. The total of members' allowances paid in 2025/26 is shown in note 29. Some members are also:

- elected members of other councils, including the county council, parish and town councils.
- nominated representatives of Huntingdonshire District Council on various organisations, including the Cambridgeshire and Peterborough Combined Council.

The Council has a significant operational relationship with Cambridgeshire County Council. The county council is the administering Council for the Council's pension fund, and many of the Council's services work with county council services on a day-to-day basis e.g., the Council is the statutory waste collection Council whereas the county council is the statutory waste disposal Council, but each of the councils has to pay the other in respect of certain types of waste.

During 2025/26, the Council:

- paid £8,546,856 to the county council (£1,627,856 for pensions and £6,919,000 for other services); and
- received £1,571,038 from the county council.

The Council also has shared services arrangements with Cambridge City Council (CCC) and South Cambridgeshire District Council (SCDC) for ICT, building control, legal and CCTV services:

Payments (from)/to	CCC £000	SCDC £000
Building control	145	-
CCTV	(629)	-
ICT services	(3,227)	(2,786)
Legal services	339	-

The home improvement agency is a shared service between the Council, Cambridge City Council and South Cambridge District Council; the agency is managed by Cambridge City Council. The Council's grant applicants' contribution to the agency for 2025/26 was £317,000 (2024/25 £312,000). The Council also incurred relocation costs where the agency received a contribution of £11,000 in 2025/26 (2024/25 £nil).

Huntingdonshire District Council are responsible for billing and collecting council tax and national non-domestic rates on behalf of the following preceptors:

- Cambridgeshire County Council
- Cambridgeshire and Peterborough Police and Crime Commissioner
- Cambridgeshire and Peterborough Fire Council
- Cambridgeshire and Peterborough Combined Authority

Full details of the amounts payable to each of the organisations are shown in the collection fund.

In respect of 2025/26 48 members out of the 52 members who served the Council and 17 officers out of the 17 officers in post returned a related party transaction disclosure form.

Following a comprehensive review of relevant statutory and voluntary disclosures and other ad-hoc information sources, the following councillors and officers (as either an individual or family interest) have disclosed a related party; this is shown below.

Organisation	Person	Relationship	Payments made by	Payments made	Interest
			the organisation to	by the Council to	
			the Council	the organisation	
			2025/26	2025/26	
			£		
Cambridgeshire County Council	Cllr Blackwell	Partner Relationship		1,369,446	Future High Streets Costs
	Cllr Bywater	Member		2,000	Level Sup Summer Transitions Project Contribution
	Cllr Corney	Member		12,486	RECAP Contribution
	Cllr Costello	Member		1,113	LHI Contribution
	Cllr Criswell	Member		7,500	DHR Funding
	Cllr Dew	Member		5,000	UKSPF - Business & IP Centres Grant
	Cllr Gardener	Member		87,863	Ramsey Great Whyte Project Work
	Cllr Gleadow	Committee appointee			
	Cllr Hunt	Committee appointee			
	Cllr Keane	Member			
	Cllr Kerr	Member			
	Cllr Martin	Councillor			
	Cllr Sanderson	Member			
	Cllr Slade	Partner Relationship			
	Cllr I Taylor	Partner Relationship			
Cllr S Taylor	Member				
Cllr Tevlin	Committee appointee				
Cambridgeshire and Peterborough Combined Authority (CPCA)	Cllr Conboy	Committee appointee			
	Cllr Davenport-Ray	Committee appointee			
	Cllr Hassall	Committee appointee			
	Cllr Hodgson-Jones	Committee appointee	*	*	
	Cllr Neish	Committee appointee			
	Cllr Wakeford	Committee appointee			
Cllr Wells	Committee appointee				
Huntingdon Town Council	Cllr Blackwell	Member			
	Cllr Harvey	Member			
	Cllr Hunt	Member			
	Cllr M Kadewere	Member	*	*	
	Cllr P Cadewere	Member			
	Cllr McAdam	Member			
Cllr Sanderson	Member				
Godmanchester town Council	Cllr Conboy	Member	*	7,873	Bio4All Community Grant
	Cllr Mickelburgh	Member			
Loves Farm Community Association/ Centre	Cllr Davenport-Ray	Trustee			
	Cllr Pickering	Member	*	*	
	Cllr Pitt	Member			
Ramsey Town Council	Cllr Brereton	Member		5,072	Bio4All Community Grant
	Cllr Clarke	Member	*	1,026	Hunts Futures Grant
	Cllr Costello	Member		29,761	Ramsey Public Realm Improvement - Grant
Social Echo North Huntingdon CIC	Cllr Howell	Director	*	*	

St Ives Town Council	Cllr Burke	Member		8,000	UKSPF Grant - Interpretation Boards
	Cllr Gleadow	Partner Member		7,353	Bio4All Community Grant
	Cllr Kerr	Member	*		
	Cllr Mokbul	Member			
	Cllr Wells	Member			
St Neots Town Council	Cllr Banks	Member		5,000	Serious Violence Duty Funding
	Cllr Pitt	Member	165,000		Contribution To St Neots Changing Places Project
	Cllr Slade	Member		75,000	Market Stage & Stage Canopy
	Cllr Terry	Member		1,745	Contribution to 2025 Christmas Lights
Yaxley Parish Council	Cllr Gulson	Member	255		Underspend on Net Zero Villages Project
Huntingdon Commemoration Hall			*	20,000	UKSPF - Vibrant Communities - Centre
				800	UKSPF - Community Event Grant Scheme
Bid Huntingdon Ltd	Cllr McAdam	Trustee		3,000	UKSPF - Business Grant - Upgrade Internet
	Cllr Wakeford	Director		2,500	Hunts Futures Grant
			*	29,200	UKSPF - Vibrant Communities Grant
NHS				30,308	Huntingdon Cinema - Feasibility Grant
	Cllr Beuttell	Partner Relationship		1,000	Community Chest Grant
	Cllr Bywater	Partner Relationship	109,259		Planning Performance Agreements -
	Cllr Howell	Employee			Redevelopment of Hinchingbrooke Hospital
Disability Huntingdonshire	Cllr Wells	Trustee	*	*	
The Wildlife Trust	Cllr Hassall	Member	*	*	
Houghton & Wyton Timebank				1,000	UKSPF - Vibrant Communities Grant
	Cllr Keane	Member	*	1,200	Community Chest Grant
				500	Community Chest Grant
Somersham Parish Council			*	330	Community Chest Grant
				250	Covid Remembrance Event
Grafham Parish Council	Cllr Gardener	Member	*	*	
Hertsmere Borough Council	Cllr Hodgson-Jones	Member	*	*	
Wyton & Houghton Parish Council	Cllr Keane	Member	*	500	Public Realm Improvement Grant
Wyton On The Hill Parish Council	Cllr Keane	Member	*	*	
Holywell-cum-Needlingworth Parish Council	Cllr Neish	Member	*	*	
Milton Keynes City Council	Cllr Tevlin	Member	*	*	
Great Gransden Parish Council	Cllr Catmur	Member	*	*	
Carter Jonas	Cllr Beuttell	Employee	*	6,300	Amber Centre Evaluation
	Cllr Sanderson	Employee			
Ramsey Rural Museum	Cllr Brereton	Member	*	*	
Reed Education	Cllr Burke	Employee	*	*	
St Ives Town Initiative	Cllr Burke	Unpaid Director	*	*	
The Burleigh Hill Community Centre	Cllr Burke	Unpaid Director	*	*	
St Ives Christmas Lights	Cllr Burke	Unpaid Director	*	*	
Conquest Livery	Cllr Butler	Unpaid Director	*	*	
Stukeley Meadows Primary School	Cllr Cawley	Employee	*	7,999	Bio4All Community Grant

Huntingdonshire Community Church	Cllr Cawley	Trustee	*	3,000	Serious Violence Duty Funding
	Cllr Gray	Trustee			
St Neots Choral Society	Cllr Chapman	Member	*	*	
St Neots Community Support	Cllr Chapman	Member	*	*	
Eaton's Community Association	Cllr Chapman	Member	*	*	
St Neots Initiative	Cllr Chapman	Member	*	*	
The Friends Of St Neots Riverside	Cllr Chapman	Member	*	*	
Ramsey Welfare Charities	Cllr Clarke	Chairman	*	*	
Ramsey St Mary's Welfare Charities	Cllr Clarke	Member	*	*	
Pinpoint Cambridgeshire	Cllr Conboy	CEO	*	*	
Roundhead Association And English Civil War Society	Cllr Conboy	Member	*	*	
Ramsey Community Centre	Cllr Corney	Trustee	*	*	
	Cllr Costello	Member			
Ramsey Christmas Lights Committee	Cllr Costello	Member	*	*	
Ramsey Wind Farm Trust	Cllr Costello	Member	*	*	
Somersham Feoffess Charity	Cllr Criswell	Member	*	*	
Somersham Poors Charity	Cllr Criswell	Member	*	*	
Friends Of Somersham Library	Cllr Criswell	Member	*	*	
Hunts Forum Of Voluntary Organisation	Cllr Criswell	Member	*	*	
	Cllr Sanderson	Member			
St Ives Corn Exchange	Cllr Gleadow	Director	*	19,645	UKSPF - Improvements
Huntingdon Community Action Projects	Cllr Harvey	Treasurer	*	*	
Huntingdon & District Cricket Club	Cllr Harvey	Vice-Chair	*	*	
Hobby Hub Yaxley	Cllr Howell	Director	*	2,800	Community Chest Grant
				10,131	Community Health & Wealth Building Grant
Yaxley Festival Funding Limited	Cllr Howell	Director	*	600	Hunts Futures Grant
Diamond Hampers	Cllr Howell	Director	*	*	
Riverside Minature Railway	Cllr Hunt	Member	*	*	
Parochial Church Council	Cllr Jordan	Member	*	*	
Huntingdon Community Group	Cllr M Kadewere	Member	*	*	
St Peters School	Cllr P Kadewere	Governor	*	*	
Thongsley Primary School	Cllr P Kadewere	Governor	*	*	
Huntingdonshire History Festival	Cllr McAdam	Trustee	*	2,500	Hunts Futures Grant
Huntingdonshire Football Association	Cllr B Mickelburgh	Unpaid Director	*	*	
Godmanchester Town FC	Cllr D Mickelburgh	Member	*	*	
Godmanchester Baptist Church	Cllr D Mickelburgh	Member	*	*	
Godmanchester Scout Group	Cllr D Mickelburgh	Member	*	*	
Money Advice St Neots	Cllr Pickering	Employee	*	*	
Slade Design	Cllr Slade	Director	*	3,000	UKSPF - Business Grant - Tourism Website
Neotists CIC	Cllr Slade	Member	*	*	
Longsands Academy	Cllr Slade	Governor	*	*	
Peter Lane	Cllr S Taylor	Employee	*	*	
	Cllr I Taylor	Partner Relationship			

* There are payments to and from Huntingdonshire District Council however these are normal business transactions and are therefore not related party transactions and do not need to be declared.

34. Capital expenditure and capital financing

The total amount of capital expenditure incurred in the year is shown in the table below, together with the resources that have been used to finance it. Where capital expenditure is to be financed in future years by charges to revenue as assets are used by the Council, the expenditure results in an increase in the capital financing requirement (CFR), a measure of the capital expenditure incurred historically by the Council that has yet to be financed.

A net increase in the CFR reflects the Council's need to borrow to finance capital expenditure. The borrowing will be repaid from an annual revenue charge (minimum revenue provision) which reflects the use of the assets over their useful lives.

2024/25		2025/26
£000		£000
72,341	Opening capital financing requirement	72,856
	Capital investment	
4,670	Property, plant and equipment	6,491
72	Intangible assets	223
11,172	Revenue expenditure funded from capital under statute	6,555
70	Investment properties	57
868	Assets under construction	4,899
	Sources of finance	
(261)	Capital receipts	(774)
(2,050)	Grants and other contributions	(1,901)
(3,305)	Capital grants unapplied reserve - community infrastructure levy	51
(7,553)	Capital grants unapplied reserve - other	(9,283)
(345)	Use of earmarked reserves	(2,258)
-	Use of s106 reserve	-
(2,823)	Minimum revenue provision	(2,865)
	Lease Liability Adjustment	1,130
72,856	Closing capital financing requirement	75,181
515	Increase in underlying need to borrow (unsupported by government financial assistance)	2,325

35. Leases

35.1 Council as lessee

The Council's lease contracts comprise leases of investment properties and operational land and buildings.

- Right of use assets

The table below shows the change in the value of right-of-use assets held under leases by the Council:

	Investment properties	Land & buildings	Total
	£000	£000	£000
Balance at 1 April 2025	848	35,849	36,697
Transfers	-	-	-
Additions	-	393	393
Revaluations	(432)	2,946	2,514
Depreciation	-	(620)	(620)
Disposals	-	-	-
Balance at 31 March 2026	416	38,568	38,984

- Transactions under leases

The Council incurred the following expenses and cash flows in relation to leases:

2024/25		2025/26
£000		£000
	Comprehensive income and expenditure statement	
39	Interest expense on lease liabilities	122
7	Expense relating to short-term leases	-
(172)	Income from subletting right-of-use assets	(57)
	Cash Flow Statement	
260	Minimum lease payments	127

- Maturity analysis of lease liabilities

The lease liabilities are due to be settled over the following time bands (measured at the undiscounted amounts of expected cash payments):

2024/25		2025/26
£000		£000
-	Less than one year	5
544	Two to five years	23
2,599	More than five years	1,703
3,143	Total undiscounted liabilities	1,731

35.2 Council as lessor**35.2.1 Finance leases**

Following the adoption of IFRS 16, the Council recognised 3 new finance leases in 2025/26. Details of these are shown in the tables below.

Maturity of Leases - Finance Leases

2024/25		2025/26
£000		£000
-	Less than one year	(1)
-	One to five years	(3)
-	More than five years	(81)
-	Total undiscounted liabilities	(85)

Total Undiscounted Receivables - Finance Leases

2024/25		2024/25
£000		£000
-	Total Undiscounted Lease Receivables	(85)
-	Unearned Finance Income	-
-	Discounted Amounts of Unguaranteed Residual Values	-
-	Net Investment in Leases	(85)

Transactions - Finance Leases

2024/25		2025/26
£000		£000
-	Selling Gain or Loss	-
-	Finance Income on Net Investment in Lease	1
-	Income Relating to Variable Lease Payments	-
-		1

Net Investment in Finance Leases

2024/25		2025/26
£000		£000
-	Net Investment at 1 April 2025	-
-	Leases Accounted For	(17)
-	Payments by Lessee	-
-	Lease modifications	-
-	Impact of Changes in unguaranteed residual values	-
-	Movement in impairment loss allowances	-
-	Net Investment 31 March 2025	(17)

The Council leases out property under operating leases for economic development purposes to provide suitable affordable accommodation for local businesses.

- Transactions under leases

The authority made the following gains and losses as a lessor during the year:

2024/25		2025/26	
£000		£000	
(5,019)	Total lease income	(4,481)	
(152)	Share of lease income relating to variable lease payments that do not depend on an index or a rate	(54)	
(5,171)		(4,535)	

- Maturity analysis of lease receivables

The lease receivables are due to be collected over the following time bands (measured at the undiscounted amounts of expected cash payments):

2024/25		2025/26	
£000		£000	
(3,471)	Less than one year	(4,295)	
(8,846)	One to five years	(10,553)	
(23,191)	More than five years	(24,608)	
(35,508)	Total undiscounted liabilities	(39,456)	

36. Termination benefits and exit packages

The Council approved 7 compulsory redundancies (2024/25: 9) and 0 voluntary redundancies (2024/25: 0). In addition, a further 5 employees left the council in 2025/26 with a compromise agreement (2024/25: 8).

All costs in respect of termination benefits and exit packages have been debited to the year in which the decision was made. The following table shows the banding of employee terminations and the total cost to the Council per band.

	Number of redundancies		Number of other departures agreed		Total number of exit packages by cost band		Total cost of exit packages in each band	
	2024/25	2025/26	2024/25	2025/26	2024/25	2025/26	2024/25	2025/26
							£000	£000
£0 - £20,000	7	4	2	3	9	7	59	72
£20,001 - £40,000	-	2	4	2	4	4	112	131
£40,001 - £60,000	1	-	2	1	3	1	150	45
£60,001 - £80,000	1	-	-	-	1	-	65	-
	9	6	8	6	17	12	386	248

37. Defined benefit pension schemes

37.1 Participation in pensions schemes

As part of the terms and conditions of employment of its officers, the Council makes contributions towards the cost of post-employment benefits. Although these benefits will not actually be payable until employees retire, the Council has a commitment to make the payments that needs to be disclosed at the time that employees earn their future entitlement.

The Council participates in two post-employment schemes:

- The Local Government Pension Scheme, administered locally by Cambridgeshire County Council – this is a funded defined benefit final salary scheme, meaning that the Council and employees pay contributions into a fund, calculated at a level intended to balance the pensions liabilities with investment assets.
- Arrangements for the award of discretionary post-retirement benefits upon early retirement – this is an unfunded defined benefit arrangement, under which liabilities are recognised when awards are made. However, there are no investment assets built up to meet these pension liabilities, and cash has to be generated to meet actual pensions payments as they eventually fall due.

37.2 Transactions relating to post-employment benefits

The Council recognises the cost of retirement benefits in the reported cost of services when they are earned by employees, rather than when the benefits are eventually paid as pensions. However, the charge we are required to make against council tax is based on the cash payable in the year, so the real cost of post-employment/retirement benefits is reversed out of the general fund via the movement in reserves statement.

The following transactions have been made in the comprehensive income and expenditure statement and the general fund balance via the movement in reserves statement during the year:

2024/25		2025/26
£000		£000
	Comprehensive income and expenditure statement	
	Cost of services	
3,844	Current service cost	2,991
411	Past service cost	-
	Financing and investment income and expenditure	
8,839	Net interest expense	9,072
(10,072)	Expected return on scheme assets	(12,213)
1,416	Interest on the effect of the asset ceiling	4,078
4,438	Total post-employment benefit charged to the surplus on the provision of service	3,928
	Other post-employment benefit charged to the comprehensive income and expenditure statement	
	Re-measurement of the net defined benefit liability comprising:	
	Return on plan assets (excluding the amount included in the net interest expense)	(98)
(6,807)	Actuarial gains and losses arising on changes in demographic assumptions	2,523
316	Actuarial gains and losses arising on changes in financial assumptions	4,103
30,498	Changes in the effect of the asset ceiling	12,054
(39,737)	Other experience gains	(6,649)
1,679	Total post-employment benefit charged to other comprehensive income and expenditure	11,933
(14,051)	Total post-employment benefit charged to the comprehensive income and expenditure statement	15,861
2024/25		2025/26
£000		£000
	Movement in reserves statement	
	Reversal of net charges made to the surplus on the provision of services for post-employment benefits in accordance with the code	(3,928)
(4,438)	Actual amount charged against the general fund for pensions in the year:	
5,166	Employer contributions to the scheme	5,283
188	Retirement benefits payable to pensioners	177
916	Total movement in pensions reserve	1,532

The amount of actuarial gains and losses recognised in the comprehensive income and expenditure statement during 2025/26 is a gain of £11,933,000 (a loss of £14,051,000 during 2024/25).

37.3 Assets and liabilities recognised in the balance sheet

The amount included in the balance sheet arising from the Council's obligation in respect of its defined benefit scheme is as follows:

	31 March 2025	31 March 2026
	£000	£000
Fair value of plan assets	210,741	222,496
Present value of funded liabilities	(156,113)	(162,570)
Present value of unfunded liabilities	(1,696)	(1,505)
	52,932	58,421
Asset ceiling adjustment	(70,358)	(62,382)
Net asset/(liability) arising from the defined benefit obligation	(17,426)	(3,961)

Following the pensions valuation by the Council's actuary, Hymans Robertson LLP, the Council determined that the fair value of its pension plan assets outweighed the present value of the plan obligations at 31 March 2026 resulting in a pension plan asset. IAS19 requires that, where a pension plan asset exists, it is measured at the lower of:

- the surplus in the defined benefit plan; and
- the asset ceiling

The asset ceiling is the present value of any economic benefits available in the form of refunds from the plan or reductions in future contributions to the plan. The Council's actuary's calculated the asset ceiling as the net present value of future service costs less net present value of future contributions.

The Council has therefore limited the pension asset recognised in its balance sheet to the asset ceiling. The adjustment has been recognised within other comprehensive income and expenditure of the comprehensive income and expenditure statement.

37.4 Assets and liabilities in relation to post-employment benefits

Reconciliation of the present value of the scheme liabilities (defined benefit obligation):

	Funded liabilities		Unfunded liabilities: discretionary benefits arrangement	
	2024/25	2025/26	2024/25	2025/26
	£000	£000	£000	£000
Opening balance at 1 April	(181,357)	(156,113)	(1,895)	(1,696)
Current service cost	(3,844)	(2,991)	-	-
Interest cost	(8,839)	(9,072)	-	-
Change in financial assumptions	30,487	4,089	11	14
Change in demographic assumptions	316	2,523	-	-
Experience gain on defined benefit obligation	1,679	(6,649)	-	-
Estimated benefits paid net of transfers in	7,204	7,112	-	-
Past service costs including curtailments	(411)	-	-	-
Contributions by scheme participants	(1,348)	(1,469)	-	-
Unfunded pension payments	-	-	188	177
Closing balance at 31 March	(156,113)	(162,570)	(1,696)	(1,505)

Reconciliation of the fair value of the scheme assets:

	Funded liabilities	
	2024/25	2025/26
	£000	£000
Opening balance at 1 April	208,166	210,741
Interest on assets	10,072	12,213
Return on assets less interest	(6,807)	(98)
Contributions by employer including unfunded	5,166	5,283
Contributions by scheme participants	1,348	1,469
Estimated benefits paid plus unfunded net of transfers in	(7,204)	(7,112)
Closing balance at 31 March	210,741	222,496

37.5 Basis for estimating assets and liabilities

Liabilities have been assessed on an actuarial basis using the projected unit method, an estimate of the pensions that will be payable in future years dependent on assumptions about mortality rates, salary levels etc. The local government pension scheme liabilities have been assessed by Hymans Robertson LLP, an independent firm of actuaries, estimates being based on the latest full valuation of the scheme as at 31 March 2026.

When the LGPS benefit structure was reformed in 2014, transitional protections were applied to certain older members close to normal retirement age. The benefits accrued from 1 April 2014 by these members are subject to an 'underpin' which means that they cannot be lower than what they would have received under the previous benefit structure. The underpin ensures that these members do not lose out from the introduction of the new scheme, by effectively giving them the better of the benefits from the old and new schemes.

The significant assumptions used by the actuary have been:

	2024/25		2025/26
Mortality assumptions			
Longevity at 65 for current pensioners:			
21.7	Men		22.6
24.4	Women		25.0
Longevity at 65 for future pensioners:			
22.0	Men		22.9
25.8	Women		26.3
3.25%	Rate of increase in salaries		3.50%
2.75%	Rate of increase in pensions		3.50%
5.80%	Rate for discounting scheme liabilities		3.50%

The estimation of the defined benefit obligations is sensitive to the actuarial assumptions set out in the table above. The sensitivity analysis below has been determined based on reasonably possible changes of the assumptions occurring at the end of the reporting period and assumes for each change that the assumption analysed changes while all the other assumptions remain constant. The assumptions in longevity, for example, assume that life expectancy increases or decreases for men and women. In practice, this is unlikely to occur, and changes in some of the assumptions may be interrelated. The estimations in the sensitivity analysis have followed the accounting policies for the scheme, i.e., on an actuarial basis using the projected unit credit method. The methods and types of assumptions used in preparing the sensitivity analysis below did not change from those used in the previous period.

37.6 Impact on the Council's cash flows

The objectives of the scheme are to keep employers' contributions at as constant a rate as possible. Funding levels are monitored on an annual basis. The contribution rate set by the current triennial valuation took effect from the financial year starting 1 April 2022.

The scheme has taken account of the national changes to the scheme under the Public Pensions Services Act 2013. Under the Act, the Local Government Pension Scheme in England and Wales may not provide benefits in relation to service after 31 March 2014. The Act provides for scheme regulations to be made within a common framework, to establish new career average revalued earnings schemes to pay pensions and other benefits to certain public servants.

Employer contributions for 2026/27 are estimated at £4,183,000.

37.7 Scheme history

	31 March 2022	31 March 2023	31 March 2024	31 March 2025	31 March 2026
	£000	£000	£000	£000	£000
Present value of liabilities:					
Local government pension scheme	(261,461)	(181,859)	(181,357)	(156,113)	(172,692)
Discretionary benefits	(2,371)	(1,978)	(1,895)	(1,696)	1,505
Fair value of assets in the local government pension scheme	193,742	188,640	208,166	210,741	229,608
Asset ceiling adjustment	-	-	(29,205)	(70,358)	(62,382)
(Deficit)/surplus in the scheme:					
Local government pension scheme	(67,719)	6,781	(2,396)	(15,730)	(5,466)
Discretionary benefits	(2,371)	(1,978)	(1,895)	(1,696)	1,505
Total	(70,090)	4,803	(4,291)	(17,426)	(3,961)

37.8 History of experience gains and losses

	2021/22	2022/23	2023/24	2024/25	2025/26
	%	%	%	%	%
Differences between the expected and actual return on assets	5.60	5.12	5.79	(3.23)	(0.04)
Experience gains and losses on liabilities	1.39	2.17	3.14	(1.06)	2.84

37.9 Past pension scheme amendments

In June 2023, the UK High Court (Virgin Media Limited v NTL Pension Trustees II Limited) ruled that certain historical amendments for contracted out defined benefit schemes were invalid if they were not accompanied by the correct actuarial confirmation. The judgement has now been upheld by the Court of Appeal.

The Local Government Pension Scheme is a contracted out defined benefit scheme, and amendments have been made during the period 1996 to 2016 which could impact member benefits. Work is being done by the Government Actuary's Department, as the Local Government Pension Scheme actuary, to assess whether section 37 certificates are in place for all amendments and some of these have been confirmed, however, at the date of these financial statements the full assessment is not complete.

Until this analysis is complete, we are unable to conclude whether there is any impact to the liabilities or if it can be reliably estimated. As a result, Huntingdonshire District Council does not consider it necessary to make any allowance for the potential impact of the Virgin Media case in its financial statements.

38. Nature and extent of risks arising from financial instruments

The Council's activities expose it to a variety of financial risks:

- credit risk – the possibility that other parties might fail to pay amounts due to the Council.
- liquidity risk – the possibility that the Council might not have funds available to meet its commitments to make payments.
- market risk – the possibility that financial loss might arise for the Council as a result of changes in such measures as interest rates and stock market movements.

The Council's overall risk management programme focuses on the unpredictability of financial markets and seeks to minimise potential adverse effects on the resources available to fund services. Risk management is carried out by a central treasury team, under policies approved by the Council. The Council provides written principles for overall risk management, as well as written policies covering specific areas, such as interest rate risk, credit risk and the investment of surplus cash.

38.1 Credit risk

Credit risk arises from investments with banks and financial institutions, as well as credit exposures to the Council's customers.

In relation to investments, the Council has adopted CIPFA's code of practice on treasury management in the public services, has an agreed treasury management strategy which addresses risk, and has set treasury management indicators to control key financial instrument risks in accordance with CIPFA's prudential code.

The Council's maximum exposure to credit risk in relation to its investments in banks and building societies of £95,473,000 (2024/25 £98,218,000) cannot be assessed generally as the risk of any institution failing to make interest payments or repay the principal sum will be specific to each individual institution. The risk of not being able to recover the principal sums applies to all of the Council's deposits but there was no evidence as at 31 March 2026 that this was likely to occur and there are no investments that as at 31 March 2026 were with institutions that had failed.

In relation to the sums owed by the Council's customers and contractual debtors, the Council makes prudent financial provision for bad debts based on an assessment of the risks for each type of debt and the age of those debts whilst maintaining a robust approach to the collection of debts. The older the debt, the greater is the provision for bad debts. The bad debt provision has taken into account the current economic climate and the increased likelihood of debtors not being able to settle their debts.

The following analysis summarises the Council's potential maximum exposure to credit risk on receivables, based on historical experience of default and uncollectability. It relates to the sundry debtor element of the total debtors, including debts of individuals, entities and housing benefit claimants.

	Amount at 31 March 2026	Average historial experience of default	Historial experience adjusted for market conditions at 31 March 2026	Estimated maximum exposure to default and uncollectability at 31 March 2026	Estimated maximum exposure to default and uncollectability at 31 March 2026
	£000			£000	£000
Sundry debtors	2,350	1.58%	1.58%	1,048	1,247

No credit limits were exceeded during the reporting period and the Council does not expect any losses from non-performance by any of its counterparties in relation to deposits and customers.

The Council does not generally allow credit for customers. The due but not impaired amount can be analysed by age as follows:

31 March 2025		31 March 2026	
£000		£000	
2,232	Less than three months	61	
373	Three to six months	40	
3,204	Six months to one year	401	
1,397	More than one year	7,938	
<u>7,205</u>		<u>8,439</u>	

38.2 Liquidity risk

The Council manages its liquidity position through the risk management procedures above as well as through cash flow management procedures required by the code of practice. In the event of an unexpected cash requirement the Council has ready access to borrowings from the money markets to cover any day-to-day cash flow need. The Council is also required to provide a balanced budget through the Local Government Act 1992, which ensures sufficient monies are raised to cover the annual expenditure. Therefore, there is no significant risk that it will be unable to raise finance to meet its commitments under financial instruments.

All trade and other payables are due to be paid in less than one year.

38.3 Market risk

38.3.1 Interest rate risk

The Council is exposed to risk in terms of its exposure to interest rate movements on its investments and borrowings. Movements in interest rates have a complex impact on the Council, depending on how variable and fixed interest rates move across differing financial instrument periods. For instance, a rise in interest rates would have the following effects:

- investments at variable rates – the interest income credited to the (surplus)/deficit on the provision of services will rise
- investments at fixed rates – the fair value of the investments asset will fall
- borrowings at variable rates – the interest expense charged to the (surplus)/deficit on the provision of services will rise
- borrowings at fixed rates – the fair value of the borrowings liability will fall

Changes in interest payable and receivable on variable rate investments will be posted to the surplus on the provision of services or other comprehensive income and expenditure lines and affect the general fund balance, subject to influences from government grants. Movements in the fair value of fixed rate investments will be reflected in the other comprehensive income and expenditure line.

The Council has strategies for managing interest rate risk. The annual treasury management strategy draws together the Council's prudential indicators and its expected treasury operations, including an expectation of interest rate movements. From this a prudential indicator is set which provides maximum and minimum limits for fixed and variable interest rate exposure. The treasury team will monitor the market and forecast interest rates within the year to adjust exposures appropriately. For instance, during periods of falling interest rates, fixed rate investments may be taken for longer periods to secure better long-term returns.

The treasury management team has a strategy for assessing interest rate exposure that feeds into the setting of the annual budget, and which is used to update the budget quarterly during the year. This allows any adverse changes to be accommodated.

38.3.2 Price risk

At 31 March 2026 the Council had £4,000,000 invested in the local authorities' property fund which is a professionally managed diversified property portfolio.

This investment is classified as a financial asset elected for fair value through other comprehensive income (FVOCI), meaning that all movements in price will impact on gains and losses recognised in other comprehensive income and expenditure.

A loss of £1,000 in respect of the local authorities property fund has been recognised in other comprehensive income and expenditure in 2025/26 (2024/25 a gain of £69,000). This reflects general movements in the value of the shares, and the spread between the 'offer' price at which the shares were purchased and the 'bid' price that any purchaser would pay for them.

The Council does not invest in equity shares and is not exposed to losses arising from movements in the prices of the shares.

38.3.3 Foreign exchange risk

The Council has no financial assets or liabilities denominated in foreign currencies and thus has no exposure to loss arising from movements in exchange rates.

39. Provisions, contingent assets and contingent liabilities

39.1 Provisions

A provision is made where an obligating event is expected to occur within the next 12 months.

	Short term provisions		
	NDR appeals provision £000	Insurance claim £000	Total £000
Balance at 1 April 2024	(1,318)	(13)	(1,331)
Amounts used in 2024/25	(3,719)	-	(3,719)
Amounts charged to services in 2024/25	1,318	-	1,318
Balance at 31 March 2025	(3,719)	(13)	(3,732)
Amounts used in 2025/26	(2,821)	-	(2,821)
Amounts charged to services in 2025/26	3,719	-	3,719
Balance at 31 March 2026	(2,821)	(13)	(2,834)

- Non-domestic ratings (NDR) appeals – the council has made a provision of £7,052,605 for non-domestic ratings appeals which based upon its best estimates of the actual liability of known appeals as at the year-end. £2,821,042 would have to be borne by the Council, with the balance being met from the other preceptors. It is not possible to quantify appeals that have not yet been lodged with the Valuation Office so there is a risk to the Council that national and local appeals may have a future impact on the accounts.
- Insurance - this provision relates to a workplace related illness acquired by an employee who was working for a predecessor Council pre-1974. It has not been possible to identify the insurer who provided employees liability cover and consequently the Council will be responsible for the cost of the claim.

39.2 Contingent assets

A contingent asset is an asset that may be received but only if a future event occurs that is not under the control of the Council. At 31 March 2026, the Council had no material contingent assets.

39.3 Contingent liabilities

A contingent liability is a potential liability which depends on the occurrence or non-occurrence of one or more uncertain future events. The Council has identified the following contingent liabilities as at 31 March 2026.

2024/25		2025/26
Estimated value of contingent liability		Estimated value of contingent liability
£000		£000
2,250	<p>Environment related</p> <p>The Environmental Protection Act 1990 Part IIA makes the Council liable for the costs of remediation of contaminated land where no other responsible person can be identified. The Council is in discussion with Cambridgeshire County Council over the planning position of a site owned by a company which is currently treating the leachate from a possible orphan site. If the planning application made to the County Council is approved, this will reduce the probability of abandonment and the likelihood of the Council becoming liable will reduce considerably.</p> <p>However, at this time there is a possibility that the Council could be liable if the site is abandoned. Current estimates are that the cost of leachate treatment would cost £150,000 per annum for 15 years (originally 30 years).</p>	2,250
654	<p>Corporate related</p> <p>Some years ago, the Council was insured by Municipal Mutual Insurance (MMI); unfortunately whilst the Council was insured by MMI they went into liquidation. Following the collapse of MMI, a scheme of arrangement was made that allowed MMI to 'run-off' the business and deal with outstanding claims. Due to the increasing numbers of liability claims that MMI continued to receive, MMI pursued the matter of their continuing liability through the courts. The supreme court gave judgement in March 2012. This clarified MMI's position in respect of future claims and led ultimately to increasing liabilities for MMI. The scheme of arrangement was enforced in January 2014. A £0.201m levy has been charged against the Council, which represents 25% of the total claims paid by MMI on behalf of the Council since 1993 (£0.855m) less a protected liability sum of £50k as agreed by the Financial Services Compensation Board.</p> <p>The contingent liability shown for 2024/25 is the balance of the total claims paid by MMI on behalf of the Council.</p>	654
3,000	<p>Other Matters</p> <p>The Authority is aware that there is a possibility that they could be liable to claims for historic matters with an estimated value of up to £3m</p>	3,000

40. Going concern

The accounts have been prepared in accordance with the Code of Practice on Local Council Accounting in the United Kingdom 2025/26 (the Code), which is based upon International Financial Reporting Standards (IFRS), as amended for the UK public sector.

The accounts have been prepared on the going concern basis. In carrying out its assessment that this basis is appropriate, made for the going concern period to 31 March 2027, management of the Council have undertaken forecasting of both income and expenditure, the expected impact on reserves, and cashflow forecasting.

Our most recent year-end balances are reported in the movement in reserves statement. Our expected general fund and earmarked reserve position is predicted to remain above the minimum level set by the Council's Corporate Director of Finance and Resources (s151 officer) throughout the going concern period.

Our cash flow forecasting and assessment of the adequacy of our liquidity position demonstrates positive cash balances throughout the going concern period, and no expectation of external borrowing. The key assumptions within this forecast include, for example, that central Government funding remains in line with current projections. Should central government funding fall, the projected minimum levels of reserves and liquidity are not expected to be significantly affected.

On this basis, the Council has a reasonable expectation that it will have adequate resources to continue in operational existence throughout the going concern period maintaining the provision of its services. For this reason, alongside the statutory guidance, we continue to adopt the going concern basis in preparing these financial statements.

Collection fund

The collection fund is an agent's statement that reflects the statutory obligation for billing authorities to maintain a separate collection fund. The statement shows the transactions of the billing Council in relation to the collection from taxpayers and distribution to local authorities and the government of council tax and non-domestic rates.

2024/25			2025/26		
Council tax	NNDR	Total	Council tax	NNDR	Total
£000	£000	£000	£000	£000	£000
(153,426)	-	(153,426)	(162,733)	-	(162,733)
-	(71,659)	(71,659)	-	(70,815)	(70,815)
-	(1,759)	(1,759)	-	(87)	(87)
(153,426)	(73,418)	(226,844)	(162,733)	(70,902)	(233,635)
Income					
Income from council tax			Income from council tax		
Income collectable from business			Income collectable from business		
Transitional protection payment			Transitional protection payment		
Expenditure					
Precepts and demands					
107,063	-	107,063	113,327	-	113,327
18,869	-	18,869	19,953	-	19,953
5,437	-	5,437	5,812	-	5,812
2,379	-	2,379	2,399	-	2,399
19,694	-	19,694	21,084	-	21,084
Payments of NNDR 1 proportionate shares					
-	35,964	35,964	-	36,929	36,929
-	6,474	6,474	-	6,647	6,647
-	719	719	-	739	739
-	28,771	28,771	-	29,543	29,543
Distribution of previous year estimated (deficit)/surplus					
-	(922)	(922)	-	(2,900)	(2,900)
(506)	(166)	(672)	(1,316)	(522)	(1,838)
(89)	-	(89)	(232)	-	(232)
(26)	(18)	(44)	(67)	(58)	(125)
(4)	-	(4)	(29)	-	(29)
(93)	(738)	(831)	(242)	(2,320)	(2,562)
Charges to the collection fund					
-	1,110	1,110	-	1,779	1,779
-	1,995	1,995	-	2,164	2,164
-	231	231	-	233	233
442	199	641	1,206	667	1,873
-	2,020	2,020	-	(2,244)	(2,244)
153,166	75,639	228,805	161,895	70,657	232,552
1,464	1,058	2,522	(838)	(245)	(1,083)
(456)	5,209	4,753	748	8,488	9,236
748	8,488	9,236	(90)	8,243	8,153

Notes to the collection fund**C1. General**

The collection fund is an agent's statement that reflects the statutory obligation of billing authorities to maintain a separate collection fund. The statements show the transactions of the billing Council in relation to the collection from taxpayers of council tax and non-domestic rates (NDR) and its distribution to local government bodies and the government.

The Council has a statutory requirement to operate a collection fund as a separate account to the general fund. The purpose of the collection fund therefore is to isolate the income and expenditure relating to council tax and NNDR. The administrative costs associated with the collection process are charged to the general fund.

Collection fund surpluses declared by the billing Council in relation to council tax are apportioned to the relevant precepting bodies in the subsequent financial year. Deficits likewise are proportionately charged to the relevant precepting bodies in the following year. For Huntingdonshire, the council tax precepting bodies are Cambridgeshire County Council, Cambridgeshire Police and Crime Commissioner, Cambridgeshire Fire Council and Cambridgeshire & Peterborough Combined Council.

In 2013/14, the local government finance regime was revised with the introduction of the retained business rates scheme. The main aim of the scheme is to give councils a greater incentive to grow businesses in their area. It does, however, also increase the financial risk due to non-collection and the volatility of the NDR tax base.

Surpluses declared by the billing Council in relation to the collection fund are apportioned to the relevant precepting bodies in the subsequent financial year in their respective proportions. Deficits likewise are proportionately charged to the relevant precepting bodies in the following year.

The national code of practice followed by local authorities in England stipulates that a collection fund income and expenditure account is included in the Council's financial statements. The collection fund balance sheet meanwhile is incorporated into the Council's consolidated balance sheet. The assets and liabilities of the Collection Fund at the end of the year are apportioned between Huntingdonshire District Council and the major preceptors in proportion to their demand on the fund for the year. The major preceptors' share of the assets and liabilities of the Collection Fund are shown as a debtor/(creditor) in Huntingdonshire District Council's accounts. Huntingdonshire District Council's share of the assets and liabilities are held in the Collection Fund Adjustment Account reserve.

C2. Calculation of council tax

Council tax derives from charges raised according to the value of residential properties, which have been classified into 9 valuation bands (A* - H) for this specific purpose. Individual charges are calculated by estimating the amount of income required to be taken from the collection fund by the Council for the forthcoming year and dividing this by the council tax base (i.e., the equivalent number of band D dwellings).

Band	2025/26		
	Number of chargeable homes less exemptions and discounts	Factor	Band D equivalents
A*	39.5	5/9	21.9
A	14,712.6	6/9	9,808.4
B	23,330.5	7/9	18,145.8
C	18,731.5	8/9	16,650.1
D	11,357.8	9/9	11,357.8
E	7,480.6	11/9	9,143.0
F	2,756.8	13/9	3,982.0
G	1,071.6	15/9	1,786.0
H	72.6	18/9	145.2
			<u>71,040.2</u>
Allowance for non-collection			(406.1)
Council tax support scheme			<u>(4,538.6)</u>
Council tax base			<u>66,095.5</u>

C3. Non-domestic rates

The Council collects non-domestic rates (NDR) for its area based on local rateable values provided by the Valuation Office Agency (VOA) multiplied by a uniform business rate set nationally by central government. In previous financial years the total amount due, less certain allowances, was paid to a central pool (the NDR pool) administered by central government, which, in turn, paid to local authorities their share of the pool, such shares being based on a standard amount per head of the local adult population.

In 2013/14, the administration of NDR changed following the introduction of a business rates retention scheme which aims to give councils a greater incentive to grow businesses in their area but also increases the financial risk due to volatility and non-collection of rates. Instead of paying NDR to the central pool, local authorities retain a proportion of the total collectible rates due. Huntingdonshire District Council's share is 40% with the remainder paid to our precepting bodies, central government 50%, Cambridgeshire County Council 9% and Cambridgeshire Fire Council 1%.

The business rates share payable for 2025/26 were estimated before the start of the financial year as £36,928,875 to central government, £6,647,198 to Cambridgeshire County Council, £738,578 to Cambridgeshire Fire Council and £29,543,101 to Huntingdonshire District Council. These sums have been paid in 2025/26 and charged to the collection fund in the year.

In addition to the local management of business rates, authorities are expected to finance appeals made in respect of rateable values as defined by VOA and hence business rates outstanding as at 31 March 2025. As such, authorities are required to make a provision for these amounts. Appeals are charged and provided for in proportion of the precepting shares. The total provision charged to the collection fund for 2025/26 has been calculated as £2,244,447 (2024/25: £2,020,000).

C4. Non-domestic rates appeals

The provision is based upon the latest list of outstanding rating list proposals provided by the Valuation Office Agency. It is an estimate based on changes in comparable hereditaments, market trends and other valuation issues, including the potential for certain proposals to be withdrawn. The estimate includes appeals and proposals in respect of live and historic rating list entries. It does not include any allowance or adjustment for the effects of transition or for changes in liability. The estimated provision is made up of the estimated outcome of appeals calculated by a weighted average of the historic outcomes.

	NNDR appeals provision
	£000
Balance at 1 April 2024	(3,294)
Amounts used in 2024/25	(7,277)
Amounts charged to services in 2024/25	3,294
Balance at 31 March 2025	(7,277)
Amounts used in 2025/26	(7,052)
Amounts charged to services in 2025/26	7,277
Balance at 31 March 2026	(7,052)

Page left blank

Glossary of terms

Accrual

The recognition of income and expenditure as it is earned or incurred, rather than as cash is received or paid.

Actuarial assumptions

These are predictions made for factors that will affect the financial condition of the pension scheme.

Amortisation

The gradual write-off of initial costs of assets.

Asset

An item having value to the Council in monetary terms.

Balance

Unallocated reserves held to resource unpredictable expenditure demands.

Business improvement district

A levy on local business to provide funding to develop the immediate area covered by the levy. The levy is agreed by majority vote.

Capital charges

Charges made to service department revenue accounts, comprising depreciation (where appropriate) based on the value of the asset employed.

Capital expenditure

Expenditure on the acquisition of non-current assets which will be used in providing services beyond the current accounting period, or expenditure on non-current assets.

Capital financing charges

The annual cost of depreciation, leasing charges and other costs of funding capital expenditure.

Capital adjustment account

The account which reflects the extent to which the Council's resources have been applied to finance capital expenditure and to meet future debt redemption or other credit liabilities.

Capital receipts

Income received from selling non-current assets.

Carrying amount

The value of an asset or liability in the balance sheet.

CIPFA

This is the Chartered Institute of Public Finance and Accountancy which is the body that represents accounting in the public sector.

Collection fund

A separate fund that records the income and expenditure relating to council tax and non-domestic rates.

Community infrastructure levy

An amount payable by developers (commercial and domestic) in respect of new buildings created within the district. The levy must be used to provide infrastructure; decisions on which are taken by district and parish Councils.

Contingent liabilities

These are amounts for which the Council may be, but is not definitely, liable.

Council tax

A tax paid by residents of the district that is based on the value of the property lived in and is paid to the Council and spent on local services.

Creditors

These are people or organisations to which the Council owes money for goods or services which have not been paid for by the end of the financial year.

Current assets

These are assets that are held for a short period of time, for example cash in the bank, inventories and debtors.

Debtors

Sums of money owed to the Council but not received by the end of the financial year.

Depreciation

The amount an asset has dropped in value is the amount it has been judged to have depreciated. Accountants use depreciation to demonstrate how much of the property, plant and equipment value has been used and therefore lowered during a financial year, for example because of wear and tear.

Earmarked reserves

Money set aside for a specific purpose.

Exceptional item

A material item in the comprehensive income and expenditure statement that falls within the ordinary activities of the Council, but which needs to be disclosed separately by virtue of its size to give a fair presentation of the accounts.

Fair value

The amount for which an asset could be exchanged, or a liability settled, between knowledgeable, willing parties in an arm's length transaction.

Finance lease

A lease is a financial agreement to pay for an asset, for example a vehicle, in regular instalments. A finance lease transfers substantially all of the risks and rewards of ownership of an item of property, plant and equipment to a lessee.

Impairment

A reduction in the value of property, plant and equipment to below its carrying amount on the balance sheet.

Impairment of debts

This recognises that the real value of debt is less than the book value.

Intangible assets

A non-physical item which provides future economic benefits. This Council's intangible assets comprise computer software licences.

Liabilities

Amounts due to individuals or organisations which will have to be paid at some time in the future. Current liabilities are usually payable within one year of the balance sheet date.

Liquid resources

Current asset investments held as readily disposable stores of value, either readily convertible into cash, or traded in an active market.

Local enterprise partnership

A government initiative to boost economic growth within defined and agreed geographical areas. Funding to enable this growth is derived from the non-domestic rates collected for that area and channelled into the "partnership" to fund schemes.

Minimum revenue provision

The minimum amount that must be charged to the revenue account each year to provide for the repayment of monies borrowed by the Council.

Non-domestic rates

Rates which are levied on business properties. From 1st April 2013, as a consequence of the Local Government Finance Act 2012, a local non-domestic rating regime was introduced that included the business rates retention scheme (see also tariff and safety net).

Operating leases

A lease is a financial agreement to pay for an asset, for example a vehicle, in regular instalments. An operating lease is where the ownership of the non-current asset remains with the lessor.

Precept

A payment to the Council's general fund, or another local council, from the Council's collection fund.

Prior year adjustments

These are material adjustments applicable to previous years arising from changes in accounting policies or from the correction of fundamental errors.

Property, plant and equipment

Non-current assets that give benefit to the Council and the services it provides for more than one year.

Provisions

Monies set aside for liabilities or losses which are likely to be incurred but where the exact amounts or dates on which they will arrive are uncertain.

Reclassification

Where comparative (prior year) figures are reclassified into new categories of income or expenditure, and the change has not been the result of a material error or accounting policy, but the amount is "material" then this is a reclassification.

Responsible financial officer

The designated post within the Council, as determined by the Accounts and Audit Regulations 2015, which holds the statutory S.151 responsibility (Local Government Act 1972). This responsibility is in respect of ensuring the proper administration of the Council's financial affairs. This post was formerly known as Chief Financial Officer.

Restated

Where there has been a material error in the accounts or a new accounting policy has been applied, then the comparative (prior year) figures have to be restated as if the correction or policy had been in place as at the end of the previous financial year.

Revenue expenditure funded from capital under statute

Spending on items normally classed as revenue but which are defined by statute as capital, e.g., improvement grants.

Revaluation reserve

The account that reflects the amount by which the value of the Council's assets has been revised following revaluation or disposal.

Revenue expenditure

Spending on day-to-day items, including salaries and wages, premises costs and supplies and services.

Revenue support grant

A grant from central government towards the cost of providing services.

Safety net

The scheme for localising non-domestic rates (NDR) includes a safety net provision. Where the actual NDR after tariff is less than 92.5% of the funding baseline, central government makes a safety net payment to the Council equal to the difference between the actual NDR and the funding baseline.

Section 106

Under planning regulations developers can be requested to make contributions to on and off-site facilities required as a result of their development.

Tariff

The scheme for localising non-domestic rates (NDR) includes baselines for both the amount of NDR the Council receives and the amount of Council funding from NDR. The Council pays central government a tariff equal to the difference between the two baselines.

True and fair view override

As required by the Accounts and Audit Regulations 2015, paragraph 8.2, the Responsible Financial Officer is required to certify that the statement of accounts presents a true and fair view of the financial position of the Council. However, as a consequence of IFRS, this has introduced the principle of the “true and fair view override”. This means, where the Responsible Financial Officer considers that to give a true and fair view would actually require the Council to provide misleading information i.e., to provide an actual outturn figure would actually show to the reader an unexpected financial position, the Responsible Financial Officer is permitted to provide alternative figures providing such divergence from the “true and fair view” is appropriately acknowledged in the notes to the accounts.

Abbreviations

CFR	capital financing requirement
CIES	comprehensive income and expenditure statement
CIL	community infrastructure levy
CIPFA	chartered institute of public finance and accountancy
CPFA	chartered public finance accountant
DRC	depreciated replacement cost
EFA	expenditure and funding analysis
FTE	full time equivalent
IAS	international accounting standards
IFRIC	international financial reporting interpretations committee
IFRS	international financial reporting standards
LEP	local enterprise partnership
LGPS	local government pension scheme
LLPG	local land and property gazetteer (UK)
MHCLG	ministry for housing, communities and local government
MRP	minimum revenue provision
MTFS	medium term financial strategy

NBV	net book value
NDR	non-domestic rates
NHB	new homes bonus
NNDR	national non-domestic rates (business rates)
PWLB	public works loans board
RICS	royal institution of chartered surveyors
RSG	revenue support grant
S106	section 106
SOLACE	society of local Council chief executives